

Prescription \$\$\$ and Sense

Medicare and Medicaid services have estimated that Americans spend \$155 billion for prescription drug coverage. With the implementation of generic drugs at your local pharmacies, \$8-\$10 billion a year can be saved!

Several chains including Jungle Jim's, Kmart, Kroger, Target, Wal-Mart, Meijer, CVS, and Walgreens are now offering an alternative to the rising costs of prescription drugs; while, local Meijer stores are offering free antibiotics. For the most up-to-date lists, please visit the following:



- <http://www.junglejims.com/pharmacy/index.asp>
- <http://www.kmart.com/pharmacy>
- <http://www.kroger.com/pharmacy/Pages/default.aspx>
- <http://sites.target.com/site/en/health/page.jsp?contentId=PRD03-004033>
- <http://www.walmart.com/pharmacy>
- <http://www.meijer.com/pharmacy?icmpid=headerpharmacy>
- <http://www.cvs.com/CVSApp/user/home/home.jsp>
- <http://webapp.walgreens.com/MYWCARDWeb/servlet/walgreens.wcard.proxy.WcardInternetProxy/RxSavingsRH>

Generics are just as effective as the Brand-Name Drugs! You might ask yourself, "What is the difference?" The FDA requires that generic versions contain the same active ingredients, be identical in strength and dosage form as well as follow the same use warnings.

The differences can be found in the name, price, and inactive ingredients list (such as pill color). Generics are sold under their chemical names and cost for less because they are made available after the patents expire on the name-brand drugs.

Generics are so much cheaper because they do not incur the initial research and development costs. By utilizing generic drugs at a cheaper price than their name-brand equivalents, it lowers healthcare costs associated with prescription drug as well as less money out of your pocket!

1-Price Prescription Drug Plan

By becoming a member of the
Jungle Jim's Olde Fashioned Pharmacy
1-Price Prescription Drug Plan you will
be eligible for **great savings** on over

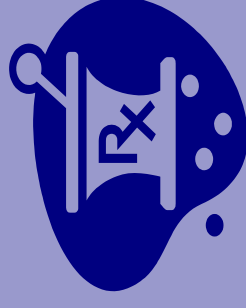


***Grind out
SAVINGS!***

180 different generics available. The prices are determined by the quantity purchased and not on a days supply basis. This will save **you** not only money but time, with less trips to the pharmacy. Join today and start saving! Enroll a friend and you will receive a \$5.00 credit on your next purchase.

Jungle Jim's Old Fashioned Pharmacy 1-Price Prescription

Enroll Now
Hundreds of Medications
Big Savings



***Jungle Jim's Olde Fashioned
Pharmacy
5440 Dixie Hwy
Fairfield, Ohio 45014***

Phone: (513)858-DRUG (3784)

BIG SAVINGS

1-Price Prescription Drug Plan

The Jungle Jim's 1-Price Prescription Drug Plan will allow you to purchase many of the top Generic Prescriptions in quantities of 90, 180, 270 and 360 tablets at a time. This was designed to combat the rising costs of medications. Many popular medications are included and our goal is to continually review the list to determine whether additional medications can be added. So, if you do not see your medication now, just ask!

The pricing has been streamlined and is the same for all medications on the list.

| # tabs/caps | Price |
|-------------|---------|
| # 90 | \$18.00 |
| #180 | \$34.00 |
| #270 | \$48.00 |
| #360 | \$60.00 |



Over 180 different individual GENERIC drugs are available

That's right, you can purchase 360 units of over 180 different drugs for just \$60.00. No waiting for mail order or claim forms to fill out. It's **EASY**, just stop in and sign up!

1-Price Prescription Drug Plan Medication List (not all inclusive)

| | |
|-----------------|--------------|
| Acyclovir | Glipizide |
| Allopurinol | Glyburide |
| Amiloride/Hctz | Hydralazine |
| Amitriptyline | Hydroxyzine |
| Atenolol | Hyoscyamine |
| Benztrapine | Ibuprofen |
| Bisoprolol/Hctz | Indapamide |
| Bumetanide | Indomethacin |
| Buspirone | Isosorbide |
| Captopril | Lisinopril |
| Captopril/Hctz | Metformin |
| Carbamazepine | Metoprolol |
| Chlorthalidone | Oxybutynin |
| Famotidine | Piroxicam |
| Fluoxetine | Propranolol |
| Furosemide | Ranitidine |

1-Price Prescription Drug Plan Enrollment Form

Name _____

Address _____

Phone _____

Social Security # _____

Date of Birth _____

Signature _____

Referred By _____

Call or visit

Jungle Jim's Olde Fashioned Pharmacy
for additional enrollment information.

*Jungle Jim's Olde Fashioned
Pharmacy
5440 Dixie Hwy
Phone: (513)858-DRUG (3784)*



| Anti-Infectives | Quantity | Anti-Infectives (continued) | Quantity |
|--|-----------------|--|-----------------|
| Amoxicillin 125mg Chewable Tablet | 20 | Penicillin VK 250mg Tablet | 28 |
| Amoxicillin 125mg/5ml Suspension (80ml) | 80 | Penicillin VK 250mg/5ml Suspension (100ml) | 100 |
| Amoxicillin 125mg/5ml Suspension (100ml) | 100 | Penicillin VK 250mg/5ml Suspension (200ml) | 200 |
| Amoxicillin 125mg/5ml Suspension (150ml) | 150 | Penicillin VK 500mg Tablet | 28 |
| Amoxicillin 200mg/5ml Suspension (50ml) | 50 | Tetracycline 250mg Capsule | 60 |
| Amoxicillin 200mg/5ml Suspension (75ml) | 75 | Tetracycline 500mg Capsule | 60 |
| Amoxicillin 200mg/5ml Suspension (100ml) | 100 | Trimethoprim and SMZ 200mg-40mg Syrup | 120 |
| Amoxicillin 250mg Capsule | 30 | Trimethoprim and SMZ 400mg-80mg Tablet | 28 |
| Amoxicillin 250mg/5ml Suspension (80ml) | 80 | Trimethoprim and SMZ DS 800mg-160mg Tablet | 20 |
| Amoxicillin 250mg/5ml Suspension (100ml) | 100 | | |
| Amoxicillin 250mg/5ml Suspension (150ml) | 150 | Cold / Flu | Quantity |
| Amoxicillin 400mg/5ml Suspension (50ml) | 50 | Benzonatate 100mg Capsule | 21 |
| Amoxicillin 400mg/5ml Suspension (75ml) | 75 | Benzonatate 200mg Capsule | 14 |
| Amoxicillin 400mg/5ml Suspension (100ml) | 100 | Ceron Syrup | 180 |
| Amoxicillin 500mg Capsule | 30 | Ceron-DM Syrup | 180 |
| Ampicillin 250mg Capsule | 28 | Cyproheptadine 4mg Tablet | 30 |
| Ampicillin 500mg Capsule | 28 | De-chlor DM Syrup | 180 |
| Cephalexin 250mg Capsule | 28 | Dex PC Syrup | 120 |
| Ciprofloxacin 250mg Tablet | 20 | Diphenhydramine 50mg Capsule | 90 |
| Ciprofloxacin 500mg Tablet | 20 | Dyphylline-GG 100mg-100mg/15ml Elixir | 120 |
| Clindamycin 150mg Capsule | 28 | Gani-Tuss-DM 100mg-10mg/5ml Syrup | 180 |
| Doxycycline Hyclate 50mg Capsule | 30 | Guaifenesin DM 100-10mg/5ml Syrup** | 180 |
| Doxycycline Hyclate 100mg Capsule | 20 | Organ-I NR 200mg Tablet | 60 |
| Doxycycline Hyclate 100mg Tablet | 20 | Pediahist DM 50-5-30-2/5ml Syrup** | 120 |
| Fluconazole 50mg Tablet | 14 | Promethazine DM Syrup | 180 |
| Fluconazole 100mg Tablet | 14 | Promethazine Plain Syrup | 180 |
| Fluconazole 150mg Tablet | 1 | SU-Tuss DM 200-20/5ml Syrup | 180 |
| Fluconazole 200mg Tablet | 14 | | |
| Metronidazole 250mg Tablet | 28 | Respiratory | Quantity |
| Metronidazole 500mg Tablet | 21 | Albuterol 2mg/5ml Syrup | 360 |
| Nystatin 100000U Suspension | 60 | | |
| Penicillin VK 125mg/5ml Suspension (100ml) | 100 | Otics (Ear Health) | Quantity |
| Penicillin VK 125mg/5ml Suspension (200ml) | 200 | Ofloxacin 0.3% Otic Solution (5ml) | 5 |

The \$5 Prescription Program covers up to the quantity specified for each eligible drug. Most quantities are based on a course of therapy at commonly prescribed dosages. Prices for greater than the specified quantity are prorated based on the \$5 Prescription Program price. Enrollment in the Kmart 90 Day Generics Program is required to receive the \$5 Prescription Program price. Only eligible drugs will be covered. List may change and vary by state at any given time. Kmart reserves the right to modify or discontinue this program or modify the terms and conditions of this program at any time without notice.

** Program pricing is limited to certain manufacturers of this medication. See Pharmacist for details.



| Dental | Quantity |
|--|----------|
| Chlorhexidine Gluconate 0.12% Solution | 480 |
| Lidocaine 2% Viscous Solution | 100 |
| Sodium Fluoride 1.1% Gel (Freshmint) | 56 |
| Sodium Fluoride 5000 Plus 1.1% Gel (Spearmint) | 51 |

| Ophthalmics (eye) | Quantity |
|--|----------|
| Ak-Con 0.1% Ophthalmic Solution** | 15 |
| Ciprofloxacin 0.3% Ophthalmic Solution (2.5ml) | 2.5 |
| Cyclopentolate 1% Ophthalmic Solution (2ml) | 2 |
| Cyclopentolate 1% Ophthalmic Solution (15ml) | 15 |
| Diclofenac 0.1% Ophthalmic Solution (2.5ml) | 2.5 |
| Flurbiprofen 0.03% Ophthalmic Solution (2.5ml) | 2.5 |
| Gentamicin 3mg/ml Ophthalmic Solution (5ml) | 5 |
| Gentamicin 3mg/ml Ophthalmic Solution (15ml) | 15 |
| Ofloxacin 0.3% Ophthalmic Solution (5ml) | 5 |
| Proparacaine 0.5% Ophthalmic Solution (15ml) | 15 |
| Tobramycin 0.3% Ophthalmic Solution | 5 |
| Trimethoprim and Poly B Ophthalmic Solution | 10 |

| Pain / Inflammation | Quantity |
|----------------------------------|----------|
| Aspirin EC 81mg Tablet** | 120 |
| Dexamethasone 0.5mg Tablet | 48 |
| Dexamethasone 0.75mg Tablet | 24 |
| Dexamethasone 1.5mg Tablet | 18 |
| Dexamethasone 4mg Tablet | 18 |
| Ibuprofen 100mg/5ml Suspension** | 120 |
| Ibuprofen 400mg Tablet | 90 |
| Ibuprofen 600mg Tablet | 60 |
| Ibuprofen 800mg Tablet | 60 |
| Ketorolac 10mg Tablet | 20 |
| Methylprednisolone 4mg Pak | 21 |
| Methylprednisolone 4mg Tablet | 21 |
| Naproxen 250mg Tablet | 60 |
| Naproxen 375mg Tablet | 60 |
| Naproxen 500mg Tablet | 60 |

| Pain / Inflammation (continued) | Quantity |
|---------------------------------|----------|
| Naproxen Sodium 275mg Tablet | 30 |
| Naproxen Sodium 550mg Tablet | 30 |
| Prednisolone 15mg/5ml Syrup | 120 |
| Prednisone 5mg Pak (21ct) | 21 |
| Prednisone 5mg Pak (48ct) | 48 |
| Prednisone 10mg Pak (21ct) | 21 |

| Topical | Quantity |
|--|----------|
| Bacitracin 500U/GM Ointment (15gm tube)** | 15 |
| Bacitracin 500U/GM Ointment (28.35gm tube)** | 28.35 |
| Betamethasone Dip. 0.05% Cream (15gm) | 15 |
| Betamethasone Dip. 0.05% Cream (45gm) | 45 |
| Betamethasone Dip. 0.05% Ointment (15gm) | 15 |
| Betamethasone Dip. 0.05% Ointment (45gm) | 45 |
| Betamethasone Valerate 0.1% Cream (15gm) | 15 |
| Betamethasone Valerate 0.1% Cream (45gm) | 45 |
| Betamethasone Valerate 0.1% Lotion (60ml) | 60 |
| Betamethasone Valerate 0.1% Ointment (15gm) | 15 |
| Betamethasone Valerate 0.1% Ointment (45gm) | 45 |
| Clindamycin 1% Solution (30ml) | 30 |
| Clindamycin 1% Solution (60ml) | 60 |
| Clobetasol 0.05% Cream (15gm) | 15 |
| Clobetasol 0.05% Cream (30gm) | 30 |
| Clobetasol 0.05% Ointment (15gm) | 15 |
| Clobetasol 0.05% Ointment (30gm) | 30 |
| Clobetasol-E 0.05% Cream (15gm) | 15 |
| Clotrimazole and Betamethasone Cream | 45 |
| Desonide 0.05% Cream (15gm) | 15 |
| Desonide 0.05% Ointment (15gm) | 15 |
| Dibucaine 1% Ointment (30gm)** | 30 |
| Econazole Nitrate 1% Cream (15gm) | 15 |
| Fluocinonide 0.05% Cream (15gm) | 15 |
| Fluocinonide 0.05% Cream (30gm) | 30 |
| Fluocinonide 0.05% Ointment (15gm) | 15 |
| Fluocinonide-E 0.05% Cream (15gm) | 15 |

The \$5 Prescription Program covers up to the quantity specified for each eligible drug. Most quantities are based on a course of therapy at commonly prescribed dosages. Prices for greater than the specified quantity are prorated based on the \$5 Prescription Program price. Enrollment in the Kmart 90 Day Generics Program is required to receive the \$5 Prescription Program price. Only eligible drugs will be covered. List may change and vary by state at any given time. Kmart reserves the right to modify or discontinue this program or modify the terms and conditions of this program at any time without notice.

** Program pricing is limited to certain manufacturers of this medication. See Pharmacist for details.



| Topical (continued) | Quantity | Gastrointestinal | Quantity |
|--|-----------------|------------------------------|-----------------|
| Gentamicin 0.1% Cream (15gm) | 15 | Diocto 60mg/15ml Syrup** | 240 |
| Gentamicin 0.1% Cream (30gm) | 30 | Doc-Q-Lace 100mg Capsule** | 100 |
| Gentamicin 0.1% Ointment (15gm) | 15 | Loperamide 2mg Capsule | 60 |
| Gentamicin 0.1% Ointment (30gm) | 30 | Ondansetron 4mg Tablet | 3 |
| Hydrocortisone 1% Cream (30gm)** | 30 | Ondansetron 8mg Tablet | 3 |
| Hydrocortisone 2.5% Cream (30gm)** | 30 | Prochlorperazine 5mg Tablet | 40 |
| Hydrocortisone 2.5% Ointment (28.35gm)** | 28.35 | Prochlorperazine 10mg Tablet | 40 |
| Mometasone 0.1% Ointment (15gm) | 15 | Promethazine 12.5mg Tablet | 20 |
| Nystatin 100MU/gm Cream (15gm) | 15 | Promethazine 25mg Tablet | 20 |
| Nystatin 100MU/gm Cream (30gm) | 30 | Promethazine 50mg Tablet | 20 |
| Nystatin 100MU/gm Ointment (15gm) | 15 | | |
| Nystatin 100MU/gm Ointment (30gm) | 30 | | |
| Nystatin/Triamcinolone 100MU-0.1 Cream (15gm) | 15 | | |
| Nystatin/Triamcinolone 100MU-0.1 Cream (30gm) | 30 | | |
| Nystatin/Triamcinolone 100MU-0.1 Oint (15gm) | 15 | | |
| Nystatin/Triamcinolone 100MU-0.1 Oint (30gm) | 30 | | |
| Proctozone-HC 2.5% Cream (30gm)** | 30 | | |
| SSD 1% Cream (25gm) | 25 | | |
| Triamcinolone Acetonide 0.025% Cream (15gm) | 15 | | |
| Triamcinolone Acetonide 0.025% Ointment (15gm) | 15 | | |
| Triamcinolone Acetonide 0.1% Cream (15gm) | 15 | | |
| Triamcinolone Acetonide 0.1% Cream (30gm) | 30 | | |
| Triamcinolone Acetonide 0.1% Ointment (15gm) | 15 | | |

| Vitamins / Supplements | Quantity |
|-------------------------------------|-----------------|
| Certa-Vite Senior w/Lutein Tablet** | 60 |
| Fluoride 0.25mg Tablet | 90 |
| Fluoride 0.5mg Tablet | 90 |
| Fluoride 1mg Tablet | 90 |

The \$5 Prescription Program covers up to the quantity specified for each eligible drug. Most quantities are based on a course of therapy at commonly prescribed dosages. Prices for greater than the specified quantity are prorated based on the \$5 Prescription Program price. Enrollment in the Kmart 90 Day Generics Program is required to receive the \$5 Prescription Program price. Only eligible drugs will be covered. List may change and vary by state at any given time. Kmart reserves the right to modify or discontinue this program or modify the terms and conditions of this program at any time without notice.

** Program pricing is limited to certain manufacturers of this medication. See Pharmacist for details.



| Behavioral Health | Quantity | Behavioral Health (continued) | Quantity |
|----------------------------|-----------------|--------------------------------------|-----------------|
| Amitriptyline 10mg Tablet | 90 | Trazodone 50mg Tablet | 90 |
| Amitriptyline 25mg Tablet | 90 | Trazodone 100mg Tablet | 90 |
| Amitriptyline 50mg Tablet | 90 | Trazodone 150mg Tablet | 90 |
| Amitriptyline 75mg Tablet | 90 | | |
| Amitriptyline 100mg Tablet | 90 | | |
| Benzotropine 0.5mg Tablet | 90 | | |
| Benzotropine 1mg Tablet | 90 | | |
| Benzotropine 2mg Tablet | 90 | | |
| Bupirone 5mg Tablet | 180 | | |
| Bupirone 10mg Tablet | 180 | | |
| Bupirone 15mg Tablet | 180 | | |
| Carbamazepine 200mg Tablet | 180 | | |
| Citalopram 10mg Tablet | 90 | | |
| Citalopram 20mg Tablet | 90 | | |
| Citalopram 40mg Tablet | 90 | | |
| Doxepin 10mg Capsule | 90 | | |
| Doxepin 25mg Capsule | 90 | | |
| Doxepin 50mg Capsule | 90 | | |
| Doxepin 75mg Capsule | 90 | | |
| Fluoxetine 10mg Capsule | 90 | | |
| Fluoxetine 10mg Tablet | 90 | | |
| Fluoxetine 20mg Capsule | 180 | | |
| Fluphenazine 1mg Tablet | 90 | | |
| Fluphenazine 2.5mg Tablet | 90 | | |
| Haloperidol 0.5mg Tablet | 90 | | |
| Haloperidol 1mg Tablet | 90 | | |
| Nortriptyline 10mg Capsule | 90 | | |
| Nortriptyline 25mg Capsule | 90 | | |
| Nortriptyline 50mg Capsule | 90 | | |
| Nortriptyline 75mg Capsule | 90 | | |
| Paroxetine 10mg Tablet | 90 | | |
| Paroxetine 20mg Tablet | 90 | | |
| Thiothixene 1mg Capsule | 90 | | |
| Thiothixene 2mg Capsule | 90 | | |

| Cardiovascular | Quantity |
|--|-----------------|
| Amiloride-HCTZ 5mg-50mg Tablet | 90 |
| Amlodipine 2.5mg Tablet | 90 |
| Amlodipine 5mg Tablet | 90 |
| Amlodipine 10mg Tablet | 90 |
| Atenolol 25mg Tablet | 90 |
| Atenolol 50mg Tablet | 90 |
| Atenolol 100mg Tablet | 90 |
| Atenolol-Chlorthalidone 50mg-25mg Tablet | 90 |
| Benazepril 5mg Tablet | 90 |
| Benazepril 10mg Tablet | 90 |
| Benazepril 20mg Tablet | 90 |
| Benazepril 40mg Tablet | 90 |
| Bisoprolol-HCTZ 2.5mg Tablet | 90 |
| Bisoprolol-HCTZ 5mg Tablet | 90 |
| Bisoprolol-HCTZ 10mg Tablet | 90 |
| Captopril 12.5mg Tablet | 180 |
| Captopril 25mg Tablet | 180 |
| Captopril 50mg Tablet | 180 |
| Carvedilol 3.125mg Tablet | 180 |
| Carvedilol 6.25mg Tablet | 180 |
| Carvedilol 12.5mg Tablet | 180 |
| Clonidine 0.1mg Tablet | 90 |
| Clonidine 0.2mg Tablet | 90 |
| Clonidine 0.3mg Tablet | 90 |
| Diltiazem 30mg Tablet | 180 |
| Diltiazem 60mg Tablet | 180 |
| Diltiazem 90mg Tablet | 90 |
| Diltiazem 120mg Tablet | 90 |

The \$10 Prescription Program covers up to the quantity specified for each eligible drug. Most quantities are based on a 90 days' supply at commonly prescribed dosages. Prices for greater than the specified quantity of an eligible drug are prorated based on the \$10 Prescription Program price. Enrollment in the Kmart 90 Day Generics Program is required to receive the \$10 Prescription Program price. Only eligible drugs will be covered. List may change and vary by state at any given time. Kmart reserves the right to modify or discontinue this program or modify the terms and conditions of this program at any time without notice.

** Program pricing is limited to certain manufacturers of this medication. See Pharmacist for details.



| Cardiovascular (continued) | Quantity | Cardiovascular (continued) | Quantity |
|-----------------------------------|-----------------|-----------------------------------|-----------------|
| Doxazosin 1mg Tablet | 90 | Lisinopril-HCTZ 20mg-25mg Tablet | 90 |
| Doxazosin 2mg Tablet | 90 | Lovastatin 10mg Tablet | 90 |
| Doxazosin 4mg Tablet | 90 | Lovastatin 20mg Tablet | 90 |
| Enalapril 2.5mg Tablet | 180 | Lovastatin 40mg Tablet | 90 |
| Enalapril 5mg Tablet | 180 | Metoprolol Tartrate 25mg Tablet | 180 |
| Enalapril 10mg Tablet | 180 | Metoprolol Tartrate 50mg Tablet | 180 |
| Enalapril 20mg Tablet | 180 | Metoprolol Tartrate 100mg Tablet | 180 |
| Enalapril-HCTZ 5mg-12.5mg Tablet | 90 | Nadolol 20mg Tablet | 90 |
| Enalapril-HCTZ 10mg-25mg Tablet | 90 | Pindolol 5mg Tablet | 90 |
| Guanfacine 1mg Tablet | 90 | Pindolol 10mg Tablet | 90 |
| Jantoven 1mg Tablet | 90 | Propranolol 10mg Tablet | 180 |
| Jantoven 2mg Tablet | 90 | Propranolol 20mg Tablet | 180 |
| Jantoven 2.5mg Tablet | 90 | Propranolol 40mg Tablet | 180 |
| Jantoven 3mg Tablet | 90 | Propranolol 80mg Tablet | 180 |
| Jantoven 4mg Tablet | 90 | Sotalol 80mg Tablet | 90 |
| Jantoven 5mg Tablet | 90 | Terazosin 1mg Capsule | 90 |
| Jantoven 6mg Tablet | 90 | Terazosin 2mg Capsule | 90 |
| Jantoven 7.5mg Tablet | 90 | Terazosin 5mg Capsule | 90 |
| Jantoven 10mg Tablet | 90 | Terazosin 10mg Capsule | 90 |
| Klor-con 8meq Tablet** | 90 | Verapamil 80mg Tablet | 90 |
| Klor-con 10meq Tablet** | 90 | Verapamil 120mg Tablet | 90 |
| Klor-con M 10meq Tablet** | 90 | Warfarin 1mg Tablet | 90 |
| Lisinopril 2.5mg Tablet | 90 | Warfarin 2mg Tablet | 90 |
| Lisinopril 5mg Tablet | 90 | Warfarin 2.5mg Tablet | 90 |
| Lisinopril 10mg Tablet | 90 | Warfarin 3mg Tablet | 90 |
| Lisinopril 20mg Tablet | 90 | Warfarin 4mg Tablet | 90 |
| Lisinopril 30mg Tablet | 90 | Warfarin 5mg Tablet | 90 |
| Lisinopril 40mg Tablet | 90 | Warfarin 6mg Tablet | 90 |
| Lisinopril-HCTZ 10-12.5mg Tablet | 90 | Warfarin 7.5mg Tablet | 90 |
| Lisinopril-HCTZ 20-12.5mg Tablet | 90 | Warfarin 10mg Tablet | 90 |

The \$10 Prescription Program covers up to the quantity specified for each eligible drug. Most quantities are based on a 90 days' supply at commonly prescribed dosages. Prices for greater than the specified quantity of an eligible drug are prorated based on the \$10 Prescription Program price. Enrollment in the Kmart 90 Day Generics Program is required to receive the \$10 Prescription Program price. Only eligible drugs will be covered. List may change and vary by state at any given time. Kmart reserves the right to modify or discontinue this program or modify the terms and conditions of this program at any time without notice.

** Program pricing is limited to certain manufacturers of this medication. See Pharmacist for details.



| Diabetes | Quantity |
|-----------------------------------|-----------------|
| Glimepiride 1mg Tablet | 90 |
| Glimepiride 2mg Tablet | 90 |
| Glimepiride 4mg Tablet | 90 |
| Glipizide 5mg Tablet | 180 |
| Glipizide 10mg Tablet | 180 |
| Glyburide Micronized 1.5mg Tablet | 90 |
| Glyburide Micronized 3mg Tablet | 90 |
| Glyburide Micronized 6mg Tablet | 90 |
| Metformin 500mg Tablet | 180 |
| Metformin 1000mg Tablet | 180 |
| Metformin 500mg ER Tablet | 180 |

| Gastrointestinal (continued) | Quantity |
|-------------------------------------|-----------------|
| Dicyclomine 10mg Capsule | 270 |
| Dicyclomine 20mg Tablet | 180 |
| Docusate Calcium 240mg Capsule** | 100 |
| Famotidine 20mg Tablet | 180 |
| Famotidine 40mg Tablet | 90 |
| Lactulose 10g/15ml Syrup** | 711 |
| Metoclopramide 5mg Tablet | 180 |
| Metoclopramide 10mg Tablet | 180 |
| Metoclopramide 5mg/5ml Syrup | 180 |
| Ranitidine 150mg Tablet | 180 |
| Ranitidine 300mg Tablet | 90 |

| Diuretic | Quantity |
|------------------------------------|-----------------|
| Furosemide 20mg Tablet | 90 |
| Furosemide 40mg Tablet | 90 |
| Furosemide 80mg Tablet | 90 |
| Hydrochlorothiazide 12.5mg Capsule | 90 |
| Hydrochlorothiazide 25mg Tablet | 90 |
| Hydrochlorothiazide 50mg Tablet | 90 |
| Indapamide 1.25mg Tablet | 90 |
| Indapamide 2.5mg Tablet | 90 |
| Spironolactone 25mg Tablet | 90 |
| Triam/HCTZ 37.5mg/25mg Capsule | 90 |
| Triam/HCTZ 37.5mg/25mg Tablet | 90 |
| Triam/HCTZ 75mg/50mg Tablet | 90 |

| Ophthalmics (eye) | Quantity |
|--|-----------------|
| Brimonidine 0.2% Ophthalmic Solution (5ml) | 5 |
| Brimonidine 0.2% Ophthalmic Solution (10ml) | 10 |
| Brimonidine 0.2% Ophthalmic Solution (15ml) | 15 |
| Levobunolol 0.5% Ophthalmic Solution (5ml) | 5 |
| Levobunolol 0.5% Ophthalmic Solution (10ml) | 10 |
| Levobunolol 0.5% Ophthalmic Solution (15ml) | 15 |
| Timolol Mal 0.25% Ophthalmic Solution (5ml) | 5 |
| Timolol Mal 0.25% Ophthalmic Solution (10ml) | 10 |
| Timolol Mal 0.25% Ophthalmic Solution (15ml) | 15 |

| Vitamins / Supplements | Quantity |
|-------------------------------|-----------------|
| Folic Acid 1mg Tablet | 90 |
| Mag Oxide 400mg Tablet ** | 90 |
| Vica-Forte Capsule** | 90 |

| Misc | Quantity |
|--------------------------|-----------------|
| Allopurinol 100mg Tablet | 90 |
| Allopurinol 300mg Tablet | 90 |
| Baclofen 10mg Tablet | 90 |
| Baclofen 20mg Tablet | 90 |
| Cytra-2 solution | 540 |
| Isoniazid 300mg Tablet | 90 |
| Oxybutynin 5mg Tablet | 180 |

| Allergies | Quantity |
|---------------------------|-----------------|
| Cetirizine 5mg Tablet** | 90 |
| Cetirizine 10mg Tablet** | 90 |
| Loratadine 10mg Tablet ** | 90 |

| Pain / Inflammation | Quantity |
|-----------------------------|-----------------|
| Chlorzoxazone 500mg Tablet | 90 |
| Cyclobenzaprine 5mg Tablet | 90 |
| Cyclobenzaprine 10mg Tablet | 90 |
| Meloxicam 7.5mg Tablet | 90 |
| Meloxicam 15mg Tablet | 90 |
| Prednisone 1mg Tablet | 90 |
| Prednisone 2.5mg Tablet | 90 |

| Gastrointestinal | Quantity |
|-------------------------|-----------------|
| Cimetidine 300mg Tablet | 90 |
| Cimetidine 400mg Tablet | 90 |
| Cimetidine 800mg Tablet | 90 |

The \$10 Prescription Program covers up to the quantity specified for each eligible drug. Most quantities are based on a 90 days' supply at commonly prescribed dosages. Prices for greater than the specified quantity of an eligible drug are prorated based on the \$10 Prescription Program price. Enrollment in the Kmart 90 Day Generics Program is required to receive the \$10 Prescription Program price. Only eligible drugs will be covered. List may change and vary by state at any given time. Kmart reserves the right to modify or discontinue this program or modify the terms and conditions of this program at any time without notice.

** Program pricing is limited to certain manufacturers of this medication. See Pharmacist for details.



| Allergies | Quantity | Cardiovascular (continued) | Quantity |
|---|----------|--|----------|
| Clemastine 1.34mg Tablet** | 90 | Captopril/HCTZ 25-15mg Tablet | 180 |
| | | Captopril/HCTZ 25-25mg Tablet | 180 |
| | | Carvedilol 25mg Tablet | 180 |
| | | Digoxin 0.125mg Tablet | 90 |
| | | Digoxin 0.25mg Tablet | 90 |
| | | Doxazosin 8mg Tablet | 90 |
| | | Guanfacine 2mg Tablet | 90 |
| | | Hydralazine 10mg Tablet | 90 |
| | | Hydralazine 25mg Tablet | 90 |
| | | Isosorbide Dinitrate 2.5mg Sublingual Tablet | 180 |
| | | Isosorbide Dinitrate 5mg Sublingual Tablet | 180 |
| | | Isosorbide Dinitrate 5mg Tablet | 270 |
| | | Isosorbide Dinitrate 10mg Tablet | 270 |
| | | Isosorbide Dinitrate 20mg Tablet | 270 |
| | | Isosorbide Dinitrate 30mg Tablet | 90 |
| | | Klor-con M 20meq Tablet** | 90 |
| | | Nadolol 40mg Tablet | 90 |
| | | Potassium Chloride 10% Liquid | 1419 |
| | | Pravastatin 10mg Tablet | 90 |
| | | Pravastatin 20mg Tablet | 90 |
| | | Pravastatin 40mg Tablet | 90 |
| | | Prazosin 1mg Capsule | 90 |
| | | Quinapril 5mg Tablet | 90 |
| | | Quinapril 10mg Tablet | 90 |
| | | Quinapril 20mg Tablet | 90 |
| | | Quinapril 40mg Tablet | 90 |
| | | Ramipril 1.25mg Capsule | 90 |
| | | Ramipril 2.5mg Capsule | 90 |
| | | Ramipril 5mg Capsule | 90 |
| | | Ramipril 10mg Capsule | 90 |
| | | Simvastatin 5mg Tablet | 90 |
| | | Simvastatin 10mg Tablet | 90 |
| | | Simvastatin 20mg Tablet | 90 |
| | | Simvastatin 40mg Tablet | 90 |
| | | Simvastatin 80mg Tablet | 90 |
| | | Sotalol AF 80mg Tablet | 90 |
| Behavioral Health | Quantity | | |
| Amitriptyline 150mg Tablet | 90 | | |
| Carbamazepine 100mg Tablet | 180 | | |
| Clomipramine 25mg Capsule | 90 | | |
| Clomipramine 50mg Capsule | 90 | | |
| Doxepin 100mg Capsule | 90 | | |
| Fluphenazine 5mg Tablet | 90 | | |
| Fluphenazine 10mg Tablet | 90 | | |
| Haloperidol 2mg Tablet | 90 | | |
| Haloperidol 5mg Tablet | 90 | | |
| Hydroxyzine Pamoate 25mg Capsule | 90 | | |
| Hydroxyzine Pamoate 50mg Capsule | 90 | | |
| Lithium Carbonate 150mg Capsule | 270 | | |
| Lithium Carbonate 300mg Capsule | 270 | | |
| Sertraline 25mg Tablet | 90 | | |
| Sertraline 50mg Tablet | 90 | | |
| Sertraline 100mg Tablet | 90 | | |
| Thioridazine 10mg Tablet | 90 | | |
| Thioridazine 25mg Tablet | 90 | | |
| Thiothixene 5mg Capsule | 90 | | |
| Trihexyphenidyl 2mg Tablet | 180 | | |
| Trihexyphenidyl 5mg Tablet | 90 | | |
| Zonisamide 25mg Capsule | 90 | | |
| Zonisamide 50mg Capsule | 90 | | |
| Zonisamide 100mg Capsule | 90 | | |
| Cardiovascular | Quantity | | |
| Atenolol-Chlorthalidone 100mg-25mg Tablet | 90 | | |
| Benazepril/HCTZ 5mg/6.25mg Tablet | 90 | | |
| Benazepril/HCTZ 10mg/12.5mg Tablet | 90 | | |
| Benazepril/HCTZ 20mg/12.5mg Tablet | 90 | | |
| Benazepril/HCTZ 20mg/25mg Tablet | 90 | | |
| Captopril 100mg Tablet | 180 | | |

The \$15 Prescription Program covers up to the quantity specified for each eligible drug. Most quantities are based on a 90 days' supply at commonly prescribed dosages. Prices for greater than the specified quantity of an eligible drug are prorated based on the \$15 Prescription Program price. Enrollment in the Kmart 90 Day Generics Program is required to receive the \$15 Prescription Program price. Only eligible drugs will be covered. List may change and vary by state at any given time. Kmart reserves the right to modify or discontinue this program or modify the terms and conditions of this program at any time without notice.

** Program pricing is limited to certain manufacturers of this medication. See Pharmacist for details.



| Diabetes | Quantity |
|---------------------------|-----------------|
| Glipizide XL 5mg Tablet | 90 |
| Metformin 850mg Tablet | 180 |
| Metformin 750mg ER Tablet | 90 |

| Ophthalmics (Eye Care) | Quantity |
|---|-----------------|
| Timolol Maleate 0.5% Ophthalmic Solution (5ml) | 5 |
| Timolol Maleate 0.5% Ophthalmic Solution (10ml) | 10 |
| Timolol Maleate 0.5% Ophthalmic Solution (15ml) | 15 |

| Diuretic | Quantity |
|----------------------------|-----------------|
| Bumetanide 0.5mg Tablet | 90 |
| Bumetanide 1mg Tablet | 90 |
| Bumetanide 2mg Tablet | 90 |
| Chlorthalidone 25mg Tablet | 90 |
| Chlorthalidone 50mg Tablet | 90 |
| Torsemide 10mg Tablet | 90 |

| Vitamins / Supplements | Quantity |
|-------------------------------|-----------------|
| Ferrous Sulfate 325mg Tablet | 180 |
| Mag 64 Tablet** | 180 |
| Renal Caps 1mg FA Capsule** | 90 |
| Rena-vite Tablet** | 90 |
| Rena-vite RX Tablet** | 90 |
| Therobec Tablet** | 90 |
| Therobec Plus Tablet** | 90 |

| Gastrointestinal | Quantity |
|-------------------------------|-----------------|
| Megestrol Acetate 20mg Tablet | 90 |
| Omeprazole 20mg Capsule** | 90 |
| Ranitidine 15mg/ml Syrup | 300 |
| Sulfasalazine 500mg Tablet | 180 |

| Thyroid | Quantity |
|-----------------------------|-----------------|
| Levothyroxine 25mcg Tablet | 90 |
| Levothyroxine 50mcg Tablet | 90 |
| Levothyroxine 75mcg Tablet | 90 |
| Levothyroxine 88mcg Tablet | 90 |
| Levothyroxine 100mcg Tablet | 90 |
| Levothyroxine 112mcg Tablet | 90 |
| Levothyroxine 125mcg Tablet | 90 |
| Levothyroxine 137mcg Tablet | 90 |
| Levothyroxine 150mcg Tablet | 90 |

| Pain / Inflammation | Quantity |
|----------------------------|-----------------|
| Methocarbamol 500mg Tablet | 90 |
| Methocarbamol 750mg Tablet | 90 |
| Tizanidine 2mg Tablet | 180 |
| Tizanidine 4mg Tablet | 180 |

| Respiratory | Quantity |
|---|-----------------|
| Albuterol 0.083% Solution Nebules (3mlx25ct) | 225 |
| Ipratropium 0.02% Solution Nebules (25x2.5ml) | 187.5 |

| Misc | Quantity |
|---------------|-----------------|
| Cytra-3 Syrup | 540 |
| Cytra-K Syrup | 540 |

The \$15 Prescription Program covers up to the quantity specified for each eligible drug. Most quantities are based on a 90 days' supply at commonly prescribed dosages. Prices for greater than the specified quantity of an eligible drug are prorated based on the \$15 Prescription Program price. Enrollment in the Kmart 90 Day Generics Program is required to receive the \$15 Prescription Program price. Only eligible drugs will be covered. List may change and vary by state at any given time. Kmart reserves the right to modify or discontinue this program or modify the terms and conditions of this program at any time without notice.

** Program pricing is limited to certain manufacturers of this medication. See Pharmacist for details.



| Arthritis | Quantity | Price |
|---------------------------|----------|-------|
| Leflunomide 10mg Tablet | 30 | \$25 |
| Leflunomide 20mg Tablet | 30 | \$25 |
| Methotrexate 2.5mg Tablet | 36 | \$25 |

| Topical | Quantity | Price |
|--|----------|-------|
| Ammonium Lactate 12% Cream** | 280 | \$25 |
| Ammonium Lactate 12% Lotion** | 400 | \$25 |
| Benzoyl Peroxide 10% Gel (60gm)** | 60 | \$25 |
| Benzoyl Peroxide 10% Wash (227gm)** | 227 | \$25 |
| Benzoyl Peroxide 2.5% Gel (60gm)** | 60 | \$25 |
| Benzoyl Peroxide 3% Cleanser (170gm)** | 170 | \$25 |
| Benzoyl Peroxide 4% Creamy Wash (170g) | 170 | \$25 |
| Benzoyl Peroxide 5% AQ Gel (60gm)** | 60 | \$25 |
| Benzoyl Peroxide 5% Gel (60gm)** | 60 | \$25 |
| Benzoyl Peroxide 5% Wash (113gm)** | 113 | \$25 |
| Benzoyl Peroxide 5% Wash (142gm)** | 142 | \$25 |
| Benzoyl Peroxide 5% Wash (148gm)** | 148 | \$25 |
| Benzoyl Peroxide 5% Wash (227gm)** | 227 | \$25 |
| Benzoyl Peroxide 6% Cleanser (170gm)** | 170 | \$25 |
| Benzoyl Peroxide 9% Cleanser (170gm)** | 170 | \$25 |
| BP 10-1 Wash (170.1gm)** | 171 | \$25 |
| Ciclopirox 8% Topical Solution (6.6ml) | 7 | \$25 |
| Clindamycin 1% Gel (30gm) | 30 | \$25 |
| Erythromycin 2% Gel (30gm) | 30 | \$25 |
| Erythromycin 2% Gel (60gm) | 60 | \$25 |
| Erythromycin 2% Solution (60ml) | 60 | \$25 |
| Hydroquinone 4% Cream (28.35gm)** | 30 | \$25 |
| Metronidazole 0.75% Gel | 45 | \$25 |
| Terconazole 0.4% Vaginal Cream | 45 | \$25 |
| Terconazole 0.8% Vaginal Cream | 20 | \$25 |
| Tretinoin 0.01% Gel (15gm) | 15 | \$25 |
| Tretinoin 0.025% Cream (20gm) | 20 | \$25 |
| Urea Nail 50% Liquid (18ml)** | 18 | \$25 |
| Vandazole 0.75% Vaginal Gel** | 70 | \$25 |

| Vitamins / Supplements | Quantity | Price |
|--|----------|-------|
| Calcitriol 0.25mcg Capsule | 30 | \$25 |
| Calcium + Vitamin D 600mg/200mg Tablet | 60 | \$5 |
| Calcium Carbonate 1250mg Tablet** | 60 | \$5 |
| Folamin 2-25-2.5mg Tablet** | 90 | \$25 |
| Foltabs 800 Tablet** | 90 | \$25 |
| Nail-EX 2.5mg Tablet** | 84 | \$25 |
| Prenacare Tablet** | 90 | \$15 |
| Prenafirst AF GF Tablet** | 90 | \$25 |
| Prenaplast Tablet** | 90 | \$15 |
| Prenatabs FA Tablet** | 90 | \$15 |
| PrenaTabs RX Tablet** | 90 | \$15 |
| Prenatal AD Tablet** | 90 | \$15 |
| Prenatal 27-0.8mg Tablet** | 90 | \$10 |
| Prenatal Plus 27-1mg Tablet** | 90 | \$15 |
| SE-Natal 90 Tablet** | 90 | \$25 |
| SE-Natal One Tablet** | 90 | \$25 |
| Trinate Tablet** | 90 | \$15 |
| Trinatal RX 1 Tablet** | 90 | \$25 |
| Vinate M Tablet** | 90 | \$25 |
| Vinate One Tablet** | 90 | \$25 |
| Vinate Ultra** | 90 | \$15 |
| Vitamin D 50000IU Capsule | 14 | \$25 |
| Vitaspire Tablet** | 90 | \$25 |

| Hormone Replacement Therapy | Quantity | Price |
|----------------------------------|----------|-------|
| Estradiol 0.5mg Tablet | 90 | \$10 |
| Estradiol 1mg Tablet | 90 | \$10 |
| Estradiol 2mg Tablet | 90 | \$10 |
| Estropiate 0.75mg Tablet | 90 | \$15 |
| Estropiate 1.5mg Tablet | 90 | \$15 |
| Medroxyprogesterone 2.5mg Tablet | 90 | \$10 |
| Medroxyprogesterone 5mg Tablet | 90 | \$10 |
| Medroxyprogesterone 10mg Tablet | 90 | \$10 |

The \$25 Prescription Program covers up to the quantity specified for each eligible drug. Most quantities are based on a course of therapy at commonly prescribed dosages. Prices for greater than the specified quantity are prorated based on the \$25 Prescription Program price. Enrollment in the Kmart 90 Day Generics Program is required to receive the \$25 Prescription Program price. Only eligible drugs will be covered. List may change and vary by state at any given time. Kmart reserves the right to modify or discontinue this program or modify the terms and conditions of this program at any time without notice.

** Program pricing is limited to certain manufacturers of this medication. See Pharmacist for details.



Women's Health Program Formulary

| Contraceptives | Quantity | Price |
|--|----------|-------|
| Sprintec 28 day Tablet** | 28 | \$10 |
| Tri-sprintec 28 day Tablet** | 28 | \$10 |
| Apri 0.15-30 28 day Tablet** | 28 | \$25 |
| Aviane 28 day Tablet** | 28 | \$25 |
| Camila 0.35mg 28 day Tablet** | 28 | \$25 |
| Cryselle 28 day Tablet** | 28 | \$25 |
| Enpresse 28 day Tablet** | 28 | \$25 |
| Errin 0.35mg 28 day Tablet** | 28 | \$25 |
| Junel 1.5/30 21 day Tablet** | 21 | \$25 |
| Junel 1/20 21 day Tablet** | 21 | \$25 |
| Junel FE 1.5-30 28 day Tablet** | 28 | \$25 |
| Junel FE 1/20 28 day Tablet** | 28 | \$25 |
| Kelnor 1/35 28 day Tablet** | 28 | \$25 |
| Lessina 0.1/0.02mg 28 day Tablet** | 28 | \$25 |
| Microgestin 1-0.02mg Tablet (21pk)** | 21 | \$25 |
| Microgestin 1.5-0.03mg Tablet (21pk)** | 21 | \$25 |
| Necon 1/50 28 day Tablet** | 28 | \$25 |
| Nortrel 0.5/35 28 day Tablet** | 28 | \$25 |
| Nortrel 1/35 21 day Tablet** | 21 | \$25 |
| Nortrel 1/35 28 day Tablet** | 28 | \$25 |
| Nortrel 7/7/7 28 day Tablet** | 28 | \$25 |
| Portia 28 day Tablet** | 28 | \$25 |
| Velivet 28 day Tablet** | 28 | \$25 |

| PMDD | Quantity | Price |
|----------------------------------|----------|-------|
| Fluoxetine 10mg Capsule (28pk)** | 28 | \$25 |
| Fluoxetine 20mg Capsule (28pk)** | 28 | \$25 |

| Fertility | Quantity | Price |
|------------------------|----------|-------|
| Clomiphene 50mg tablet | 15 | \$25 |

| Urinary Tract / Bladder | Quantity | Price |
|---------------------------------------|----------|-------|
| Phenazopyridine 100mg Tablet | 20 | \$5 |
| Phenazopyridine 200mg Tablet | 20 | \$5 |
| Nitrofurantoin Macrocrystals 50mg Cap | 42 | \$25 |
| Nitrofurantoin 100mg Capsule | 42 | \$25 |

| Breast Cancer | Quantity | Price |
|-----------------------|----------|-------|
| Tamoxifen 10mg Tablet | 180 | \$25 |
| Tamoxifen 20mg Tablet | 90 | \$25 |

| Osteoporosis | Quantity | Price |
|-------------------------|----------|-------|
| Alendronate 5mg Tablet | 90 | \$15 |
| Alendronate 10mg Tablet | 90 | \$15 |
| Alendronate 35mg Tablet | 12 | \$15 |
| Alendronate 70mg Tablet | 12 | \$15 |

The \$25 Prescription Program covers up to the quantity specified for each eligible drug. Most quantities are based on a course of therapy at commonly prescribed dosages. Prices for greater than the specified quantity are prorated based on the \$25 Prescription Program price. Enrollment in the Kmart 90 Day Generics Program is required to receive the \$25 Prescription Program price. Only eligible drugs will be covered. List may change and vary by state at any given time. Kmart reserves the right to modify or discontinue this program or modify the terms and conditions of this program at any time without notice.

** Program pricing is limited to certain manufacturers of this medication. See Pharmacist for details.

Formulary Version: 9-20-2010

Kroger



Search: All Sites

**Sign in**

Download coupons, view your points and more.

Create an account

Registration is free & easy. Why join?

[Kroger.com](#) > [\\$4/\\$10 Generic](#) > Alphabetical Drug List**Alphabetical Drug List**

| Medication Name | Category | 90-Day Supply | |
|------------------------------|---------------------|---------------|--------|
| | | 30-Day Supply | |
| A | | | |
| ACYCLOVIR CAP 200MG | Antiviral | 30 | 90 |
| ALBUTEROL INH SOL 0.083% *† | Asthma | 75 ML | 225 ML |
| ALBUTEROL SOL 0.5% † | Asthma | 20 ML | 60 ML |
| ALBUTEROL SYRUP | Asthma | 120 ML | 360 ML |
| ALBUTEROL TAB 2MG | Asthma | 90 | 270 |
| ALBUTEROL TAB 4MG | Asthma | 60 | 180 |
| ALLOPURINOL TAB 100MG | Anti-Gout | 30 | 90 |
| ALLOPURINOL TAB 300MG | Anti-Gout | 30 | 90 |
| AMILORIDE/HCTZ TAB 5-50 | Heart Health | 30 | 90 |
| AMITRIPTYLINE TAB 10MG | Antidepressant | 60 | 180 |
| AMITRIPTYLINE TAB 25MG | Antidepressant | 60 | 180 |
| AMITRIPTYLINE TAB 50MG | Antidepressant | 60 | 180 |
| AMITRIPTYLINE TAB 75MG | Antidepressant | 30 | 90 |
| AMITRIPTYLINE TAB 100MG | Antidepressant | 30 | 90 |
| AMOXICILLIN CAP 250MG | Antibiotic | 30 | 90 |
| AMOXICILLIN CAP 500MG | Antibiotic | 30 | 90 |
| AMOXICILLIN SUSP 125MG † | Antibiotic | 80 ML | 240 ML |
| AMOXICILLIN SUSP 125MG † | Antibiotic | 100 ML | 300 ML |
| AMOXICILLIN SUSP 125MG † | Antibiotic | 150 ML | 450 ML |
| AMOXICILLIN SUSP 200MG † | Antibiotic | 50 ML | 150 ML |
| AMOXICILLIN SUSP 200MG *† | Antibiotic | 75 ML | 225 ML |
| AMOXICILLIN SUSP 200MG *† | Antibiotic | 100 ML | 300 ML |
| AMOXICILLIN SUSP 250MG † | Antibiotic | 80 ML | 240 ML |
| AMOXICILLIN SUSP 250MG † | Antibiotic | 100 ML | 300 ML |
| AMOXICILLIN SUSP 250MG † | Antibiotic | 150 ML | 450 ML |
| AMOXICILLIN SUSP 400MG † | Antibiotic | 50 ML | 150 ML |
| AMOXICILLIN SUSP 400MG *† | Antibiotic | 75 ML | 225 ML |
| AMOXICILLIN SUSP 400MG *† | Antibiotic | 100 ML | 300 ML |
| ANUCORT-HC SUPP 25MG | Topical Medications | 12 | 36 |
| ATENOLOL TAB 25MG | Heart Health | 30 | 90 |
| ATENOLOL TAB 100MG | Heart Health | 30 | 90 |
| ATENOLOL TAB 50MG | Heart Health | 30 | 90 |
| ATENOLOL/CHLRTHAL TAB 100-25 | Heart Health | 30 | 90 |
| ATENOLOL/CHLRTHAL TAB 50-25 | Heart Health | 30 | 90 |
| ATROPINE SUL OPTH SOL 1% † | Glaucoma/Eye | 5 ML | 15 ML |
| B | | | |
| BACLOFEN TAB 10MG | Muscle Relaxant | 60 | 180 |
| BELLADONNA ALK W/PB TAB | Gastro Intestinal | 60 | 180 |
| BENAZEPRIL TAB 10MG | Heart Health | 30 | 90 |
| BENAZEPRIL TAB 20MG | Heart Health | 30 | 90 |
| BENAZEPRIL TAB 40MG | Heart Health | 30 | 90 |
| BENAZEPRIL TAB 5MG | Heart Health | 30 | 90 |
| BENZONATATE CAP 100MG | Cough/Cold | 14 | 42 |

| | | | |
|---------------------------|---------------------|-------|--------|
| BENZTROPINE MES TAB 2MG | Parkinson's | 30 | 90 |
| BETAMETH DIP CRM 0.05% † | Topical Medications | 15 GM | 45 GM |
| BETAMETH DIP CRM 0.05% † | Topical Medications | 45 GM | 135 GM |
| BETAMETH VAL CRM 0.1% † | Topical Medications | 15 GM | 45 GM |
| BETAMETH VAL CRM 0.1% † | Topical Medications | 45 GM | 135 GM |
| BETAMETH VAL OINT 0.1% † | Topical Medications | 45 GM | 135 GM |
| BETAMETH VAL OINT 0.1% † | Topical Medications | 15 GM | 45 GM |
| BISOPROLOL/HCTZ TAB 10MG | Heart Health | 30 | 90 |
| BISOPROLOL/HCTZ TAB 2.5MG | Heart Health | 30 | 90 |
| BISOPROLOL/HCTZ TAB 5MG | Heart Health | 30 | 90 |
| BUMETANIDE TAB 0.5MG | Heart Health | 30 | 90 |
| BUMETANIDE TAB 1MG | Heart Health | 30 | 90 |
| BUSPIRONE TAB 5MG | Anti Anxiety | 60 | 180 |
| BUSPIRONE TAB 10MG * | Anti Anxiety | 60 | 180 |

C

| | | | |
|----------------------------|-------------------|--------|---------|
| CAPTOPRIL TAB 100MG | Heart Health | 90 | 270 |
| CAPTOPRIL TAB 12.5MG | Heart Health | 90 | 270 |
| CAPTOPRIL TAB 25MG | Heart Health | 90 | 270 |
| CAPTOPRIL TAB 50MG | Heart Health | 90 | 270 |
| CARBAMAZEPINE TAB 200MG * | Miscellaneous | 100 | 300 |
| CARVEDILOL TAB 12.5MG | Heart Health | 60 | 180 |
| CARVEDILOL TAB 25MG * | Heart Health | 60 | 180 |
| CARVEDILOL TAB 3.125MG | Heart Health | 60 | 180 |
| CARVEDILOL TAB 6.25MG | Heart Health | 60 | 180 |
| CEPHALEXIN CAP 250MG | Antibiotic | 40 | 120 |
| CEPHALEXIN CAP 500MG | Antibiotic | 40 | 120 |
| CERON DROP *† | Cough/Cold | 30 ML | 90 ML |
| CERON-DM SYRP * | Cough/Cold | 120 ML | 360 ML |
| CHLORHEXIDINE RNSE 0.12% † | Antibiotic | 473 ML | 1419 ML |
| CHLORPROPAMIDE TAB 100MG * | Diabetes | 30 | 90 |
| CHLORTHALIDONE TAB 25MG | Heart Health | 30 | 90 |
| CHLORTHALIDONE TAB 50MG | Heart Health | 30 | 90 |
| CIMETIDINE TAB 800MG * | Gastro Intestinal | 30 | 90 |
| CIPROFLOXACIN TAB 250MG | Antibiotic | 20 | 60 |
| CIPROFLOXACIN TAB 500MG | Antibiotic | 20 | 60 |
| CITALOPRAM TAB 20MG | Antidepressant | 30 | 90 |
| CITALOPRAM TAB 40MG | Antidepressant | 30 | 90 |
| CLONIDINE TAB 0.1MG | Heart Health | 30 | 90 |
| CLONIDINE TAB 0.2MG | Heart Health | 30 | 90 |
| CYCLOBENZAPRINE TAB 10MG | Muscle Relaxant | 30 | 90 |
| CYCLOBENZAPRINE TAB 5MG | Muscle Relaxant | 30 | 90 |
| CYTRA-2 SOL † | Miscellaneous | 473 ML | 1419 ML |

D

| | | | |
|-------------------------|-------------------|----|-----|
| DEXAMETHASONE TAB 0.5MG | Anti Inflammatory | 30 | 90 |
| DEXAMETHASONE TAB 0.75M | Anti Inflammatory | 18 | 54 |
| DEXAMETHASONE TAB 4MG | Anti Inflammatory | 12 | 36 |
| DICLOFENAC SOD TAB 75MG | Anti Inflammatory | 60 | 180 |
| DICYCLOMINE CAP 10MG | Gastro Intestinal | 90 | 270 |
| DICYCLOMINE TAB 20MG | Gastro Intestinal | 60 | 180 |
| DIGOXIN TAB 0.125MG | Heart Health | 30 | 90 |
| DIGOXIN TAB 0.25MG | Heart Health | 30 | 90 |
| DILTIAZEM TAB 120MG | Heart Health | 30 | 90 |
| DILTIAZEM TAB 30MG | Heart Health | 60 | 180 |
| DILTIAZEM TAB 60MG | Heart Health | 60 | 180 |
| DILTIAZEM TAB 90MG * | Heart Health | 60 | 180 |
| DOXAZOSIN TAB 1MG | Heart Health | 30 | 90 |
| DOXAZOSIN TAB 2MG | Heart Health | 30 | 90 |
| DOXAZOSIN TAB 4MG | Heart Health | 30 | 90 |

| | | | |
|-----------------------|----------------|----|----|
| DOXAZOSIN TAB 8MG | Heart Health | 30 | 90 |
| DOXEPIIN CAP 10MG | Antidepressant | 30 | 90 |
| DOXEPIIN CAP 25MG | Antidepressant | 30 | 90 |
| DOXEPIIN CAP 50MG | Antidepressant | 30 | 90 |
| DOXEPIIN CAP 75MG | Antidepressant | 30 | 90 |
| DOXEPIIN CAP 100MG | Antidepressant | 30 | 90 |
| DOXYCYCLINE CAP 50MG | Antibiotic | 30 | 90 |
| DOXYCYCLINE CAP 100MG | Antibiotic | 20 | 60 |
| DOXYCYCLINE TAB 100MG | Antibiotic | 20 | 60 |

E

| | | | |
|-----------------------------|--------------|--------|---------|
| ENALAPRIL MAL TAB 10MG | Heart Health | 30 | 90 |
| ENALAPRIL MAL TAB 2.5MG | Heart Health | 30 | 90 |
| ENALAPRIL MAL TAB 20MG | Heart Health | 30 | 90 |
| ENALAPRIL MAL TAB 5MG | Heart Health | 30 | 90 |
| ENALAPRIL/HCTZ TAB 5/12.5 | Heart Health | 30 | 90 |
| ERYTHROMYCIN CAP EC 250MG * | Antibiotic | 28 | 84 |
| ERYTHROMYCIN OPTH OINT † | Antibiotic | 3.5 GM | 10.5 GM |
| ESTRADIOL TAB 0.5MG | Hormone | 30 | 90 |
| ESTRADIOL TAB 1MG | Hormone | 30 | 90 |
| ESTRADIOL TAB 2MG | Hormone | 30 | 90 |
| ESTROPIPATE TAB 0.75MG | Hormone | 30 | 90 |
| ESTROPIPATE TAB 1.5MG * | Hormone | 30 | 90 |

F

| | | | |
|------------------------------|------------------------|-------|--------|
| FAMOTIDINE TAB 20MG | Gastro Intestinal | 30 | 90 |
| FLUCONAZOLE TB 150MG U/U | Antifungal | 1 | 3 |
| FLUCINOLONE ACE SOL 0.01% *† | Topical Medications | 60 ML | 180 ML |
| FLUCINONIDE CRM 0.05% † | Topical Medications | 15 GM | 45 GM |
| FLUCINONIDE CRM 0.05% † | Topical Medications | 30 GM | 90 GM |
| FLUORIDE CHW TAB 0.25MG* | Supplements & Vitamins | 30 | 90 |
| FLUOXETINE CAP 10MG | Antidepressant | 30 | 90 |
| FLUOXETINE CAP 20MG | Antidepressant | 30 | 90 |
| FLUOXETINE CAP 40MG | Antidepressant | 30 | 90 |
| FLUOXETINE TAB 10MG * | Antidepressant | 30 | 90 |
| FLUPHENAZINE TAB 1MG | Antipsychotic | 60 | 180 |
| FOLIC ACID TAB 1MG | Supplements & Vitamins | 30 | 90 |
| FUROSEMIDE TAB 20MG | Diuretic | 30 | 90 |
| FUROSEMIDE TAB 40MG | Diuretic | 30 | 90 |
| FUROSEMIDE TAB 80MG | Diuretic | 30 | 90 |

G

| | | | |
|-----------------------------|--------------|-------|-------|
| GENTAMICIN OPTH SOL 0.3% † | Antibiotic | 5 ML | 15 ML |
| GENTAMICIN SULF CRM 0.1% † | Antibiotic | 15 GM | 45 GM |
| GENTAMICIN SULF OINT 0.1% † | Antibiotic | 15 GM | 45 GM |
| GLIMEPIRIDE TAB 1MG | Diabetes | 30 | 90 |
| GLIMEPIRIDE TAB 2MG | Diabetes | 30 | 90 |
| GLIMEPIRIDE TAB 4MG | Diabetes | 30 | 90 |
| GLIPIZIDE TAB 5MG | Diabetes | 30 | 90 |
| GLIPIZIDE TAB 10MG * | Diabetes | 60 | 180 |
| GLYBURIDE MICRO TAB 3MG | Diabetes | 30 | 90 |
| GLYBURIDE MICRO TAB 6MG | Diabetes | 30 | 90 |
| GLYBURIDE TAB 2.5MG | Diabetes | 30 | 90 |
| GLYBURIDE TAB 5MG | Diabetes | 30 | 90 |
| GUANFACINE TAB 1MG | Heart Health | 30 | 90 |

H

| | | | |
|-----------------------|---------------|----|-----|
| HALOPERIDOL TAB 0.5MG | Antipsychotic | 60 | 180 |
| HALOPERIDOL TAB 1MG | Antipsychotic | 60 | 180 |
| HALOPERIDOL TAB 2MG | Antipsychotic | 60 | 180 |
| HALOPERIDOL TAB 5MG | Antipsychotic | 60 | 180 |

| | | | |
|---|---------------------|-------|-------|
| HYDRALAZINE TAB 10MG | Heart Health | 30 | 90 |
| HYDRALAZINE TAB 25MG | Heart Health | 30 | 90 |
| HYDROCHLOROTHIAZIDE (HCTZ) CAP 12.5MG * | Diuretic | 30 | 90 |
| HYDROCHLOROTHIAZIDE (HCTZ) TAB 25MG | Diuretic | 30 | 90 |
| HYDROCHLOROTHIAZIDE (HCTZ) TAB 50MG | Diuretic | 30 | 90 |
| HYDROCORTISONE CRM 1% † | Topical Medications | 30 GM | 90 GM |
| HYDROCORTISONE CRM 2.5% † | Topical Medications | 30 GM | 90 GM |

I

| | | | |
|-----------------------------|-------------------|---------|----------|
| IBUPROFEN SUSP 100MG/5ML * | Anti Inflammatory | 120 ML | 360 ML |
| IBUPROFEN TAB 400MG | Anti Inflammatory | 90 | 270 |
| IBUPROFEN TAB 600MG | Anti Inflammatory | 60 | 180 |
| IBUPROFEN TAB 800MG | Anti Inflammatory | 60 | 180 |
| INDAPAMIDE TAB 1.25MG | Diuretic | 30 | 90 |
| INDAPAMIDE TAB 2.5MG | Diuretic | 30 | 90 |
| INDOMETHACIN CAP 25MG * | Anti Inflammatory | 60 | 180 |
| IPRATROPIUM SOL .02% UDV *† | Asthma | 62.5 ML | 187.5 ML |
| ISONIAZID TAB 300MG | Antibiotic | 30 | 90 |
| ISOSORBID MON ER TAB 30MG | Heart Health | 30 | 90 |
| ISOSORBID MON ER TAB 60MG | Heart Health | 30 | 90 |

K

| | | | |
|--------------------------|------------------------|----|----|
| KLOR-CON 10 SR TAB 10MEQ | Supplements & Vitamins | 30 | 90 |
| KLOR-CON 8 SR TAB 8MEQ | Supplements & Vitamins | 30 | 90 |
| KLOR-CON M 10 TAB | Supplements & Vitamins | 30 | 90 |

L

| | | | |
|-------------------------------|---------------|--------|---------|
| LACTULOSE SYP 10G/15ML † | Miscellaneous | 473 ML | 1419 ML |
| LEVOBUNOLOL OPTH 0.5% | Glaucoma/Eye | 5 ML | 15 ML |
| LEVOTHYROXINE TAB 50MCG | Thyroid | 30 | 90 |
| LEVOTHYROXINE TAB 75MCG | Thyroid | 30 | 90 |
| LEVOTHYROXINE TAB 88MCG | Thyroid | 30 | 90 |
| LEVOTHYROXINE TAB 100MCG | Thyroid | 30 | 90 |
| LEVOTHYROXINE TAB 112 MCG | Thyroid | 30 | 90 |
| LEVOTHYROXINE TAB 125MCG | Thyroid | 30 | 90 |
| LEVOTHYROXINE TAB 137MCG | Thyroid | 30 | 90 |
| LEVOTHYROXINE TAB 150MCG | Thyroid | 30 | 90 |
| LEVOTHYROXINE TAB 175MCG * | Thyroid | 30 | 90 |
| LEVOTHYROXINE TAB 200MCG * | Thyroid | 30 | 90 |
| LEVOTHYROXINE TAB 25MCG | Thyroid | 30 | 90 |
| LIDOCAINE VISCOUS SOL 2% † | Miscellaneous | 100 ML | 300 ML |
| LISINAPRIL TAB 2.5MG | Heart Health | 30 | 90 |
| LISINAPRIL TAB 5MG | Heart Health | 30 | 90 |
| LISINAPRIL TAB 10MG | Heart Health | 30 | 90 |
| LISINAPRIL TAB 20MG | Heart Health | 30 | 90 |
| LISINAPRIL/HCTZ TAB 10/12.5 | Heart Health | 30 | 90 |
| LISINAPRIL/HCTZ TAB 20/12.5 * | Heart Health | 30 | 90 |
| LISINAPRIL/HCTZ TAB 20/25 * | Heart Health | 30 | 90 |
| LITHIUM CARB CAP 300MG * | Miscellaneous | 90 | 270 |
| LORATADINE TAB 10MG | Allergy | 30 | 90 |
| LOVASTATIN TAB 10MG * | Heart Health | 30 | 90 |
| LOVASTATIN TAB 20MG * | Heart Health | 30 | 90 |

M

| | | | |
|-----------------------------|------------------------|----|-----|
| MAGNESIUM OXIDE TAB 400MG | Supplements & Vitamins | 60 | 180 |
| MAG-SR TAB 64MG * | Supplements & Vitamins | 30 | 90 |
| MEDROXYPROGST ACE TAB 10MG | Hormone | 30 | 90 |
| MEDROXYPROGST ACE TAB 2.5MG | Hormone | 30 | 90 |
| MEDROXYPROGST ACE TAB 5MG | Hormone | 30 | 90 |

| | | | |
|-----------------------------------|-------------------|--------|--------|
| MEGESTROL TAB 20MG * | Miscellaneous | 30 | 90 |
| MELOXICAM TAB 15MG | Anti Inflammatory | 30 | 90 |
| MELOXICAM TAB 7.5MG | Anti Inflammatory | 30 | 90 |
| METFORMIN ER TAB 500MG * | Diabetes | 60 | 180 |
| METFORMIN TAB 1000MG * | Diabetes | 60 | 180 |
| METFORMIN TAB 500MG | Diabetes | 60 | 180 |
| METFORMIN TAB 850MG | Diabetes | 60 | 180 |
| METHYLDOPA TAB 250MG * | Heart Health | 60 | 180 |
| METHYLDOPA TAB 500MG * | Heart Health | 30 | 90 |
| METHYLPREDNISOLONE DSPK TAB 4MG † | Anti Inflammatory | 21 | 63 |
| METHYLPREDNISOLONE TAB 4MG | Anti Inflammatory | 21 | 63 |
| METOCLOPRAMIDE SYRUP 5MG | Gastro Intestinal | 120 ML | 360 ML |
| METOCLOPRAMIDE TAB 10MG | Gastro Intestinal | 60 | 180 |
| METOPROLOL TARTRATE TAB 50MG | Heart Health | 60 | 180 |
| METOPROLOL TARTRATE TAB 100MG * | Heart Health | 60 | 180 |
| METOPROLOL TARTRATE TAB 25MG | Heart Health | 60 | 180 |
| METRONIDAZOLE TAB 250MG | Antibiotic | 28 | 84 |
| METRONIDAZOLE TAB 500MG | Antibiotic | 14 | 42 |

N

| | | | |
|-------------------------------|---------------------|--------|---------|
| NADOLOL TAB 20MG | Heart Health | 30 | 90 |
| NADOLOL TAB 40MG | Heart Health | 30 | 90 |
| NAPROXEN TAB 375MG * | Anti Inflammatory | 60 | 180 |
| NAPROXEN TAB 500MG * | Anti Inflammatory | 60 | 180 |
| NEO/POLY/DEX OPTH OINT .1% † | Antibiotic | 3.5 GM | 10.5 GM |
| NEO/POLY/DEX OPTH SUSP .1% † | Antibiotic | 5 ML | 15 ML |
| NORTRIPTYLINE CAP 10MG | Antidepressant | 30 | 90 |
| NORTRIPTYLINE CAP 25MG | Antidepressant | 30 | 90 |
| NYSTATIN CRM † | Topical Medications | 15 GM | 45 GM |
| NYSTATIN CRM † | Topical Medications | 30 GM | 90 GM |
| NYSTATIN OINT † | Topical Medications | 15 GM | 45 GM |
| NYSTATIN OINT † | Topical Medications | 30 GM | 90 GM |
| NYSTATIN/TRIAMCINOLONE CRM † | Topical Medications | 15 GM | 45 GM |
| NYSTATIN/TRIAMCINOLONE CRM † | Topical Medications | 30 GM | 90 GM |
| NYSTATIN/TRIAMCINOLONE OINT † | Topical Medications | 15 GM | 45 GM |

O

| | | | |
|--------------------|---------------|----|-----|
| OXYBUTYNIN TAB 5MG | Miscellaneous | 60 | 180 |
|--------------------|---------------|----|-----|

P

| | | | |
|-------------------------------|------------------------|--------|---------|
| PAROXETINE TAB 10MG * | Antidepressant | 30 | 90 |
| PAROXETINE TAB 20MG * | Antidepressant | 30 | 90 |
| PENICILLIN VK SOL 125MG † | Antibiotic | 100 ML | 300 ML |
| PENICILLIN VK SOL 125MG † | Antibiotic | 200 ML | 600 ML |
| PENICILLIN VK SOL 250MG † | Antibiotic | 100 ML | 300 ML |
| PENICILLIN VK TAB 250MG | Antibiotic | 40 | 120 |
| PHENAZOPYRIDINE TAB 100MG | Analgesic | 30 | 90 |
| PHENAZOPYRIDINE TAB 200MG | Analgesic | 30 | 90 |
| PILOCARPINE OPTH SOL 1% † | Glaucoma/Eye | 15 GM | 45 GM |
| PILOCARPINE OPTH SOL 2% † | Glaucoma/Eye | 15 GM | 45 GM |
| PINDOLOL TAB 5MG | Heart Health | 30 | 90 |
| PINDOLOL TAB 10MG | Heart Health | 30 | 90 |
| POLYMYXIN/TRIMETH OPTH SOL *† | Antibiotic | 10 ML | 30 ML |
| POTASSIUM CL ORAL SOL 10% † | Supplements & Vitamins | 473 ML | 1419 ML |
| PRAVASTATIN TAB 10MG | Heart Health | 30 | 90 |
| PRAVASTATIN TAB 20MG | Heart Health | 30 | 90 |
| PRAVASTATIN TAB 40MG * | Heart Health | 30 | 90 |
| PRAZOSIN CAP 1MG | Heart Health | 30 | 90 |
| PRAZOSIN CAP 2MG | Heart Health | 30 | 90 |
| PRAZOSIN CAP 5MG | Heart Health | 30 | 90 |

| | | | |
|-----------------------------|------------------------|--------|--------|
| PREDNISONE TAB 2.5MG | Anti Inflammatory | 30 | 90 |
| PREDNISONE TAB 5MG | Anti Inflammatory | 30 | 90 |
| PREDNISONE TAB 10MG | Anti Inflammatory | 30 | 90 |
| PREDNISONE TAB 10MG DSPK † | Anti Inflammatory | 21 | 63 |
| PREDNISONE TAB 10MG DSPK *† | Anti Inflammatory | 48 | 144 |
| PREDNISONE TAB 20MG | Anti Inflammatory | 30 | 90 |
| PREDNISONE TAB 5MG DSPK † | Anti Inflammatory | 21 | 63 |
| PREDNISONE TAB 5MG DSPK *† | Anti Inflammatory | 48 | 144 |
| PRENATAL PLUS TAB* | Supplements & Vitamins | 30 | 90 |
| PROCHLORPERAZINE TAB 10MG | Gastro Intestinal | 30 | 90 |
| PROMETHAZINE PLAIN SYRUP * | Cough/Cold | 120 ML | 360 ML |
| PROMETHAZINE TAB 25MG | Gastro Intestinal | 30 | 90 |
| PROMETHAZINE W/DM SYRUP | Cough/Cold | 120 ML | 360 ML |
| PROPRANOLOL TAB 10MG | Heart Health | 60 | 180 |
| PROPRANOLOL TAB 20MG | Heart Health | 60 | 180 |
| PROPRANOLOL TAB 40MG | Heart Health | 60 | 180 |
| PROPRANOLOL TAB 80MG | Heart Health | 60 | 180 |

R

| | | | |
|----------------------|-------------------|----|-----|
| RANITIDINE TAB 150MG | Gastro Intestinal | 60 | 180 |
| RANITIDINE TAB 300MG | Gastro Intestinal | 30 | 90 |

S

| | | | |
|-------------------------------------|---------------------|--------|--------|
| SELENIUM SULF LOT 2.5% *† | Miscellaneous | 120 ML | 360 ML |
| SILVER SULFADIAZINE (SSD) CRM 1% *† | Topical Medications | 50 GM | 150 GM |
| SOTALOL HCL TAB 80MG * | Heart Health | 30 | 90 |
| SPIRONOLACTONE TAB 25MG * | Diuretic | 30 | 90 |
| SULFACET SOD OPTH SOL 10% † | Antibiotic | 15 GM | 45 GM |
| SULFAMETH/TRIMETH DS TAB | Antibiotic | 20 | 60 |
| SULFAMETH/TRIMETH TAB | Antibiotic | 20 | 60 |
| SULFATRIM PED SUSP | Antibiotic | 120 ML | 360 ML |

T

| | | | |
|--------------------------------|---------------------|-------|--------|
| TERAZOSIN CAP 1MG | Heart Health | 30 | 90 |
| TERAZOSIN CAP 2MG | Heart Health | 30 | 90 |
| TERAZOSIN CAP 5MG | Heart Health | 30 | 90 |
| TERAZOSIN CAP 10MG | Heart Health | 30 | 90 |
| TERBINAFINE TAB 250MG * | Antifungal | 30 | 90 |
| TETRACYCLINE CAP 250MG | Antibiotic | 60 | 180 |
| TETRACYCLINE CAP 500MG | Antibiotic | 60 | 180 |
| THIORIDAZINE TAB 25MG | Antipsychotic | 30 | 90 |
| THIORIDAZINE TAB 50MG | Antipsychotic | 30 | 90 |
| THIOTHIXENE CAP 2MG | Antipsychotic | 30 | 90 |
| TIMOLOL MAL OPTH SOL .25% † | Glaucoma/Eye | 5 ML | 15 ML |
| TIMOLOL MAL OPTH SOL 0.5% † | Glaucoma/Eye | 5 ML | 15 ML |
| TOBRAMYCIN OPTH SOL 0.3% † | Antibiotic | 5 ML | 15 ML |
| TRAZODONE TAB 50MG | Antidepressant | 30 | 90 |
| TRAZODONE TAB 100MG | Antidepressant | 30 | 90 |
| TRAZODONE TAB 150MG | Antidepressant | 30 | 90 |
| TRIAMCINOLONE ACE CRM 0.025% † | Topical Medications | 15 GM | 45 GM |
| TRIAMCINOLONE ACE CRM 0.025% † | Topical Medications | 80 GM | 240 GM |
| TRIAMCINOLONE ACE CRM 0.1% † | Topical Medications | 15 GM | 45 GM |
| TRIAMCINOLONE ACE CRM 0.1% † | Topical Medications | 80 GM | 240 GM |
| TRIAMCINOLONE ACE CRM 0.5% † | Topical Medications | 15 GM | 45 GM |
| TRIAMCINOLONE ACE OINT 0.1% † | Topical Medications | 15 GM | 45 GM |
| TRIAMCINOLONE ACE OINT 0.1% † | Topical Medications | 80 GM | 240 GM |
| TRIAMTEREN/HCTZ CAP 37.5/25 | Heart Health | 30 | 90 |
| TRIAMTEREN/HCTZ TAB 37.5/25 | Heart Health | 30 | 90 |
| TRIAMTEREN/HCTZ TAB 75/50 | Heart Health | 30 | 90 |
| TRIHEXYPHENIDYL TAB 2MG | Parkinson's | 60 | 180 |



| | | | |
|---------------------|--------------|----|-----|
| VERAPAMIL TAB 80MG | Heart Health | 60 | 180 |
| VERAPAMIL TAB 120MG | Heart Health | 60 | 180 |

W

| | | | |
|---------------------------|---------------|----|----|
| WARFARIN SODIUM TAB 1MG | Anticoagulant | 30 | 90 |
| WARFARIN SODIUM TAB 2.5MG | Anticoagulant | 30 | 90 |
| WARFARIN SODIUM TAB 2MG | Anticoagulant | 30 | 90 |
| WARFARIN SODIUM TAB 3MG | Anticoagulant | 30 | 90 |
| WARFARIN SODIUM TAB 4MG | Anticoagulant | 30 | 90 |
| WARFARIN SODIUM TAB 5MG * | Anticoagulant | 30 | 90 |
| WARFARIN SODIUM TAB 6MG | Anticoagulant | 30 | 90 |
| WARFARIN SODIUM TAB 7.5MG | Anticoagulant | 30 | 90 |
| WARFARIN SODIUM TAB 10MG | Anticoagulant | 30 | 90 |

Women's Health

| | | | |
|---------------------------|----------------|----------|------------|
| ALENDRONATE SOD TAB 35MG | Women's Health | 4 - \$9 | 12 - \$24 |
| ALENDRONATE SOD TAB 70MG | Women's Health | 4 - \$9 | 12 - \$24 |
| CLOMIPHENE CIT TAB 50MG | Women's Health | 5 - \$9 | 15 - \$24 |
| SPRINTEC TAB 0.25/0.035 * | Women's Health | 28 - \$9 | 84 - \$24 |
| TAMOXIFEN TAB 10MG | Women's Health | 60 - \$9 | 180 - \$24 |
| TAMOXIFEN TAB 20MG | Women's Health | 30 - \$9 | 90 - \$24 |
| TRINESSA 28 TAB * | Women's Health | 28 - \$9 | 84 - \$24 |

*Certain medications are priced higher in California, Montana and Wyoming due to state laws.

†Prepackaged drugs are covered only in unit sizes specified on the list.



For your convenience, this list is sorted alphabetically.

Target's \$4 generic drug program information has been provided in cooperation with the Center for Consumer Self Care, UCSF Department of Clinical Pharmacy.

| Generic Drug Name / Strength | Form | 30-day qty. \$4 | 90-day qty. \$10 | 30-day qty. \$9 | 90-day qty. \$24 |
|------------------------------|------------|-----------------------|------------------------|-----------------------|------------------------|
| ACYCLOVIR 200 MG | Capsule | 30 | 90 | - | - |
| ALBUTEROL 2 MG/5 ML | Syrup | 120 | 360 | - | - |
| ALBUTEROL 2 MG | Tablet | 90 | 270 | - | - |
| ALBUTEROL 4 MG | Tablet | 60 | 180 | - | - |
| ALBUTEROL NEB 0.083%* | Solution | 75 | 225 | - | - |
| ALBUTEROL NEB 0.5% | Solution | 20 | 60 | - | - |
| ALENDRONATE SOD 35 MG | Tablet | - | - | 4 | 12 |
| ALENDRONATE SOD 70 MG | Tablet | - | - | 4 | 12 |
| ALLOPURINOL 100 MG | Tablet | 30 | 90 | - | - |
| ALLOPURINOL 300 MG | Tablet | 30 | 90 | - | - |
| AMILORIDE/HCTZ 5-50 MG | Tablet | 30 | 90 | - | - |
| AMITRIPTYLINE 10 MG | Tablet | 30 | 90 | - | - |
| AMITRIPTYLINE 25 MG | Tablet | 30 | 90 | - | - |
| AMITRIPTYLINE 50 MG | Tablet | 30 | 90 | - | - |
| AMITRIPTYLINE 75 MG | Tablet | 30 | 90 | - | - |
| AMITRIPTYLINE 100 MG | Tablet | 30 | 90 | - | - |
| AMOXICILLIN 125 MG/5 ML | Suspension | 80 | 240 | - | - |
| AMOXICILLIN 125 MG/5 ML | Suspension | 100 | 300 | - | - |
| AMOXICILLIN 125 MG/5 ML | Suspension | 150 | 450 | - | - |
| AMOXICILLIN 200 MG/5 ML | Suspension | 50 | 150 | - | - |
| AMOXICILLIN 200 MG/5 ML* | Suspension | 75 | 225 | - | - |
| AMOXICILLIN 200 MG/5 ML* | Suspension | 100 | 300 | - | - |
| AMOXICILLIN 250 MG | Capsule | 30 | 90 | - | - |
| AMOXICILLIN 250 MG/5 ML | Suspension | 80 | 240 | - | - |
| AMOXICILLIN 250 MG/5 ML | Suspension | 100 | 300 | - | - |
| AMOXICILLIN 250 MG/5 ML | Suspension | 150 | 450 | - | - |
| AMOXICILLIN 400 MG/5 ML | Suspension | 50 | 150 | - | - |
| AMOXICILLIN 400 MG/5 ML* | Suspension | 75 | 225 | - | - |

| | | | | | |
|------------------------------|---------------------|-----|-----|---|---|
| AMOXICILLIN 400 MG/5 ML* | Suspension | 100 | 300 | - | - |
| AMOXICILLIN 500 MG | Capsule | 30 | 90 | - | - |
| ANTIPYRINE/BENZOCAINE | Otic Solution | 10 | 30 | - | - |
| ATENOLOL 25 MG | Tablet | 30 | 90 | - | - |
| ATENOLOL 50 MG | Tablet | 30 | 90 | - | - |
| ATENOLOL 100 MG | Tablet | 30 | 90 | - | - |
| ATENOLOL/CHLORTHAL 50/25 MG | Tablet | 30 | 90 | - | - |
| ATENOLOL/CHLORTHAL 100/25 MG | Tablet | 30 | 90 | - | - |
| ATROPINE SULFATE 1% | Ophthalmic Solution | 5 | 15 | - | - |

B

| | | | | | |
|----------------------------------|----------|----|-----|----|-----|
| BACLOFEN 10 MG | Tablet | 30 | 90 | - | - |
| BELLADONNA ALKALOIDS/PB | Tablet | 60 | 180 | - | - |
| BENZAEPRI 5 MG | Tablet | 30 | 90 | - | - |
| BENZAEPRI 10 MG | Tablet | 30 | 90 | - | - |
| BENZAEPRI 20 MG | Tablet | 30 | 90 | - | - |
| BENZAEPRI 40 MG | Tablet | 30 | 90 | - | - |
| BENZONATATE 100 MG | Capsule | 14 | 42 | - | - |
| BENZTROPINE 2 MG | Tablet | 30 | 90 | - | - |
| BETAMETHASONE DIPROPIONATE 0.05% | Cream | 15 | 45 | - | - |
| BETAMETHASONE DIPROPIONATE 0.05% | Cream | 45 | 135 | - | - |
| BETAMETHASONE VALERATE 0.1% | Cream | 15 | 45 | - | - |
| BETAMETHASONE VALERATE 0.1% | Cream | 45 | 135 | - | - |
| BETAMETHASONE VALERATE 0.1% | Ointment | 15 | 45 | - | - |
| BETAMETHASONE VALERATE 0.1% | Ointment | 45 | 135 | - | - |
| BISOPROLOL/HCTZ 2.5/6.25 MG | Tablet | 30 | 90 | - | - |
| BISOPROLOL/HCTZ 5/6.25 MG | Tablet | 30 | 90 | - | - |
| BISOPROLOL/HCTZ 10/6.25 MG | Tablet | 30 | 90 | - | - |
| BUPROPION 150 MG SR* | Tablet | - | - | 17 | N/A |
| BUMETANIDE 0.5 MG | Tablet | 30 | 90 | - | - |
| BUMETANIDE 1 MG | Tablet | 30 | 90 | - | - |
| BUSPIRONE 5 MG | Tablet | 60 | 180 | - | - |
| BUSPIRONE 10 MG* | Tablet | 60 | 180 | - | - |

C

| | | | | | |
|-------------------|--------|----|-----|---|---|
| CAPTOPRIL 12.5 MG | Tablet | 60 | 180 | - | - |
| CAPTOPRIL 25 MG | Tablet | 60 | 180 | - | - |

| | | | | | |
|-------------------------------|----------|-----|------|---|----|
| CAPTOPRIL 50 MG | Tablet | 60 | 180 | - | - |
| CAPTOPRIL 100 MG | Tablet | 60 | 180 | - | - |
| CARBAMAZEPINE 200 MG* | Tablet | 60 | 180 | - | - |
| CARVEDILOL 3.125 MG | Tablet | 60 | 180 | - | - |
| CARVEDILOL 6.25 MG | Tablet | 60 | 180 | - | - |
| CARVEDILOL 12.5 MG | Tablet | 60 | 180 | - | - |
| CARVEDILOL 25 MG* | Tablet | 60 | 180 | - | - |
| CEPHALEXIN 250 MG | Capsule | 28 | 84 | - | - |
| CEPHALEXIN 500 MG | Capsule | 30 | 90 | - | - |
| CERON 1-3.5 MG/ML* | Drops | 30 | 90 | - | - |
| CERON DM 12.5/4/15 MG/5 ML | Syrup | 120 | 360 | - | - |
| CHLORHEXIDINE GLUCONATE 0.12% | Solution | 473 | 1419 | - | - |
| CHLORPROPAMIDE 100 MG* | Tablet | 30 | 90 | - | - |
| CIMETIDINE 800 MG* | Tablet | 30 | 90 | - | - |
| CIPROFLOXACIN 250 MG | Tablet | 14 | 42 | - | - |
| CIPROFLOXACIN 500 MG | Tablet | 20 | 60 | - | - |
| CITALOPRAM 20 MG | Tablet | 30 | 90 | - | - |
| CITALOPRAM 40 MG | Tablet | 30 | 90 | - | - |
| CLOMIPHENE 50 MG | Tablet | - | - | 5 | 15 |
| CLONIDINE 0.1 MG | Tablet | 30 | 90 | - | - |
| CLONIDINE 0.2 MG | Tablet | 30 | 90 | - | - |
| COLCHICINE 0.6 MG | Tablet | 30 | 90 | - | - |
| CYCLOBENZAPRINE 5 MG | Tablet | 30 | 90 | - | - |
| CYCLOBENZAPRINE 10 MG | Tablet | 30 | 90 | - | - |
| CYTRA-2 | Solution | 180 | 540 | - | - |

D

| | | | | | |
|-------------------------------------|---------|-----|-----|---|---|
| DEC-CHLORPHEN 1-3.5 MG/ML* | Drops | 30 | 90 | - | - |
| DEC-CHLORPHEN DM 12.5/4/15 MG/5 ML* | Syrup | 118 | 354 | - | - |
| DEXAMETHASONE 0.75 MG | Tablet | 12 | 36 | - | - |
| DEXAMETHASONE 0.5 MG | Tablet | 30 | 90 | - | - |
| DEXAMETHASONE 4 MG | Tablet | 6 | 18 | - | - |
| DICLOFENAC ER 75 MG | Tablet | 60 | 180 | - | - |
| DICYCLOMINE 10 MG | Capsule | 90 | 270 | - | - |
| DICYCLOMINE 20 MG | Tablet | 60 | 180 | - | - |
| DIGOXIN 0.125 MG | Tablet | 30 | 90 | - | - |
| DIGOXIN 0.25 MG | Tablet | 30 | 90 | - | - |
| DILTIAZEM 30 MG | Tablet | 60 | 180 | - | - |

| | | | | | |
|----------------------------|----------------|----|-----|---|---|
| DILTIAZEM 60 MG | Tablet | 60 | 180 | - | - |
| DILTIAZEM 90 MG* | Tablet | 60 | 180 | - | - |
| DILTIAZEM 120 MG | Tablet | 30 | 90 | - | - |
| DOXAZOSIN 1 MG | Tablet | 30 | 90 | - | - |
| DOXAZOSIN 2 MG | Tablet | 30 | 90 | - | - |
| DOXAZOSIN 4 MG | Tablet | 30 | 90 | - | - |
| DOXAZOSIN 8 MG | Tablet | 30 | 90 | - | - |
| DOXEPIN HCL 10 MG | Capsule | 30 | 90 | - | - |
| DOXEPIN HCL 25 MG | Capsule | 30 | 90 | - | - |
| DOXEPIN HCL 50 MG | Capsule | 30 | 90 | - | - |
| DOXEPIN HCL 75 MG | Capsule | 30 | 90 | - | - |
| DOXEPIN HCL 100 MG | Capsule | 30 | 90 | - | - |
| DOXYCYCLINE HYCLATE 50 MG | Capsule | 30 | 90 | - | - |
| DOXYCYCLINE HYCLATE 100 MG | Capsule/Tablet | 20 | 60 | - | - |

E

| | | | | | |
|--------------------------|---------------------|----|----|---|---|
| ENALAPRIL 2.5 MG | Tablet | 30 | 90 | - | - |
| ENALAPRIL 5 MG | Tablet | 30 | 90 | - | - |
| ENALAPRIL 10 MG | Tablet | 30 | 90 | - | - |
| ENALAPRIL 20 MG | Tablet | 30 | 90 | - | - |
| ENALAPRIL/HCTZ 5/12.5 MG | Tablet | 30 | 90 | - | - |
| ERYTHROMYCIN 5 MG/GM* | Ophthalmic Ointment | 4 | 12 | - | - |
| ESTRADIOL 0.5 MG | Tablet | 30 | 90 | - | - |
| ESTRADIOL 1 MG | Tablet | 30 | 90 | - | - |
| ESTRADIOL 2 MG | Tablet | 30 | 90 | - | - |
| ESTROPIPATE 0.75 MG | Tablet | 30 | 90 | - | - |
| ESTROPIPATE 1.5 MG* | Tablet | 30 | 90 | - | - |

F

| | | | | | |
|---------------------------|----------|----|-----|----|-----|
| FAMOTIDINE 20 MG | Tablet | 60 | 90 | - | - |
| FINASTERIDE 5 MG | Tablet | - | - | 30 | N/A |
| FLUCONAZOLE 150 MG | Tablet | 1 | 3 | - | - |
| FLUCINONIDE 0.05% | Cream | 15 | 45 | - | - |
| FLUCINONIDE 0.05% | Cream | 30 | 90 | - | - |
| FLUCINOLONE ACETIDE 0.01% | Solution | 60 | 180 | - | - |
| FLUOXETINE 10 MG* | Tablet | 30 | 90 | - | - |
| FLUOXETINE 10 MG | Capsule | 30 | 90 | - | - |
| FLUOXETINE 20 MG | Capsule | 30 | 90 | - | - |

| | | | | | |
|-------------------|---------|----|----|---|---|
| FLUOXETINE 40 MG* | Capsule | 30 | 90 | - | - |
| FLUPHENAZINE 1 MG | Tablet | 30 | 90 | - | - |
| FOLIC ACID 1 MG | Tablet | 30 | 90 | - | - |
| FUROSEMIDE 20 MG | Tablet | 30 | 90 | - | - |
| FUROSEMIDE 40 MG | Tablet | 30 | 90 | - | - |
| FUROSEMIDE 80 MG | Tablet | 30 | 90 | - | - |

G

| | | | | | |
|----------------------|---------------------|----|-----|---|---|
| GENTAMICIN 0.1% | Cream/Ointment | 15 | 45 | - | - |
| GENTAMICIN 0.3% | Ophthalmic Solution | 5 | 15 | - | - |
| GLIMEPIRIDE 1 MG | Tablet | 30 | 90 | - | - |
| GLIMEPIRIDE 2 MG | Tablet | 30 | 90 | - | - |
| GLIMEPIRIDE 4 MG | Tablet | 30 | 90 | - | - |
| GLIPIZIDE 5 MG | Tablet | 30 | 90 | - | - |
| GLIPIZIDE 10 MG* | Tablet | 60 | 180 | - | - |
| GLYBURIDE 2.5 MG | Tablet | 30 | 90 | - | - |
| GLYBURIDE 5 MG | Tablet | 30 | 90 | - | - |
| GLYBURIDE MICRO 3 MG | Tablet | 30 | 90 | - | - |
| GLYBURIDE MICRO 6 MG | Tablet | 30 | 90 | - | - |
| GUANFACINE 1 MG | Tablet | 30 | 90 | - | - |

H

| | | | | | |
|------------------------------|-------------|----|----|---|---|
| HALOPERIDOL 0.5 MG | Tablet | 30 | 90 | - | - |
| HALOPERIDOL 1 MG | Tablet | 30 | 90 | - | - |
| HALOPERIDOL 2 MG | Tablet | 30 | 90 | - | - |
| HALOPERIDOL 5 MG | Tablet | 30 | 90 | - | - |
| HYDRALAZINE 10 MG | Tablet | 30 | 90 | - | - |
| HYDRALAZINE 25 MG | Tablet | 30 | 90 | - | - |
| HYDROCHLOROTHIAZIDE 12.5 MG* | Capsule | 30 | 90 | - | - |
| HYDROCHLOROTHIAZIDE 25 MG | Tablet | 30 | 90 | - | - |
| HYDROCHLOROTHIAZIDE 50 MG | Tablet | 30 | 90 | - | - |
| HYDROCORTISONE 1% | Cream | 30 | 90 | - | - |
| HYDROCORTISONE 2.5% | Cream | 30 | 90 | - | - |
| HYDROCORTISONE AC 25 MG | Suppository | 12 | 36 | - | - |

I

| | | | | | |
|------------------------|------------|-----|-----|---|---|
| IBUPROFEN 100 MG/5 ML* | Suspension | 120 | 360 | - | - |
|------------------------|------------|-----|-----|---|---|

| | | | | | |
|---------------------------------|----------|----|-----|---|---|
| IBUPROFEN 400 MG | Tablet | 90 | 270 | - | - |
| IBUPROFEN 600 MG | Tablet | 60 | 180 | - | - |
| IBUPROFEN 800 MG | Tablet | 30 | 90 | - | - |
| INDAPAMIDE 1.25 MG | Tablet | 30 | 90 | - | - |
| INDAPAMIDE 2.5 MG | Tablet | 30 | 90 | - | - |
| INDOMETHACIN 25 MG* | Capsule | 60 | 180 | - | - |
| IPRATROPIUM NEB 0.2 MG/ML* | Solution | 75 | 225 | - | - |
| ISONIAZID 300 MG | Tablet | 30 | 90 | - | - |
| ISOSORBIDE MONONITRATE ER 30 MG | Tablet | 30 | 90 | - | - |
| ISOSORBIDE MONONITRATE ER 60 MG | Tablet | 30 | 90 | - | - |

L

| | | | | | |
|-----------------------------|---------------------|-----|-----|----------------------------------|-----|
| LACTULOSE 10 GM/15 ML | Syrup | 237 | 711 | - | - |
| LEVITRA® 20 MG | Tablet | - | - | 1 (limit 10 per guest per month) | N/A |
| LEVOBUNOLOL 0.5% | Ophthalmic Solution | 5 | 15 | - | - |
| LEVOTHYROXINE 25 MCG | Tablet | 30 | 90 | - | - |
| LEVOTHYROXINE 50 MCG | Tablet | 30 | 90 | - | - |
| LEVOTHYROXINE 75 MCG | Tablet | 30 | 90 | - | - |
| LEVOTHYROXINE 88 MCG | Tablet | 30 | 90 | - | - |
| LEVOTHYROXINE 100 MCG | Tablet | 30 | 90 | - | - |
| LEVOTHYROXINE 112 MCG | Tablet | 30 | 90 | - | - |
| LEVOTHYROXINE 125 MCG | Tablet | 30 | 90 | - | - |
| LEVOTHYROXINE 137 MCG | Tablet | 30 | 90 | - | - |
| LEVOTHYROXINE 150 MCG | Tablet | 30 | 90 | - | - |
| LEVOTHYROXINE 175 MCG* | Tablet | 30 | 90 | - | - |
| LEVOTHYROXINE 200 MCG* | Tablet | 30 | 90 | - | - |
| LIDOCAINE VISCOUS 2% | Solution | 100 | 300 | - | - |
| LISINAPRIL 2.5 MG | Tablet | 30 | 90 | - | - |
| LISINAPRIL 5 MG | Tablet | 30 | 90 | - | - |
| LISINAPRIL 10 MG | Tablet | 30 | 90 | - | - |
| LISINAPRIL 20 MG | Tablet | 30 | 90 | - | - |
| LISINAPRIL/HCTZ 10-12.5 MG | Tablet | 30 | 90 | - | - |
| LISINAPRIL/HCTZ 20-12.5 MG* | Tablet | 30 | 90 | - | - |
| LISINAPRIL/HCTZ 20-25 MG* | Tablet | 30 | 90 | - | - |
| LITHIUM CARB 300 MG* | Capsule | 90 | 270 | - | - |
| LORATADINE 10 MG | Tablet | 30 | 90 | - | - |

| | | | | | |
|-------------------|--------|----|----|---|---|
| LOVASTATIN 10 MG* | Tablet | 30 | 90 | - | - |
| LOVASTATIN 20 MG* | Tablet | 30 | 90 | - | - |

M

| | | | | | |
|-----------------------------|-----------------|----|-----|---|---|
| MAGNESIUM OXIDE 400 MG | Tablet | 30 | 90 | - | - |
| MAG64 64 MG* | Tablet | 60 | 180 | - | - |
| MEDROXYPROGESTERONE 2.5 MG | Tablet | 30 | 90 | - | - |
| MEDROXYPROGESTERONE 5 MG | Tablet | 30 | 90 | - | - |
| MEDROXYPROGESTERONE 10 MG | Tablet | 10 | 30 | - | - |
| MEGESTROL 20 MG* | Tablet | 30 | 90 | - | - |
| MELOXICAM 7.5 MG | Tablet | 30 | 90 | - | - |
| MELOXICAM 15 MG | Tablet | 30 | 90 | - | - |
| METFORMIN 500 MG | Tablet | 60 | 180 | - | - |
| METFORMIN 850 MG | Tablet | 60 | 180 | - | - |
| METFORMIN 1000 MG* | Tablet | 60 | 180 | - | - |
| METFORMIN ER 500 MG* | Tablet | 60 | 180 | - | - |
| METHYLDOPA 250 MG* | Tablet | 60 | 180 | - | - |
| METHYLDOPA 500 MG* | Tablet | 30 | 90 | - | - |
| METHYLPREDNISOLONE 4 MG | Dose Pak/Tablet | 21 | 63 | - | - |
| METOCLOPRAMIDE 5 MG/5 ML | Syrup | 60 | 180 | - | - |
| METOCLOPRAMIDE 10 MG | Tablet | 60 | 180 | - | - |
| METOPROLOL TARTRATE 25 MG | Tablet | 60 | 180 | - | - |
| METOPROLOL TARTRATE 50 MG | Tablet | 60 | 180 | - | - |
| METOPROLOL TARTRATE 100 MG* | Tablet | 60 | 180 | - | - |
| METRONIDAZOLE 250 MG | Tablet | 28 | 84 | - | - |
| METRONIDAZOLE 500 MG | Tablet | 14 | 42 | - | - |

N

| | | | | | |
|-------------------------------|-----------------------|----|-----|---|---|
| NADOLOL 20 MG | Tablet | 30 | 90 | - | - |
| NADOLOL 40 MG* | Tablet | 30 | 90 | - | - |
| NAPROXEN 375 MG* | Tablet | 60 | 180 | - | - |
| NAPROXEN 500 MG* | Tablet | 60 | 180 | - | - |
| NEO/POLYMX/DEXAMETHASONE 0.1% | Ophthalmic Ointment | 4 | 12 | - | - |
| NEO/POLYMX/DEXAMETHASONE 0.1% | Ophthalmic Suspension | 5 | 15 | - | - |
| NORTRIPTYLINE 10 MG | Capsule | 30 | 90 | - | - |
| NORTRIPTYLINE 25 MG | Capsule | 30 | 90 | - | - |
| NYSTATIN 100,000U | Cream/Ointment | 15 | 45 | - | - |

| | | | | | |
|------------------------|----------------|----|----|---|---|
| NYSTATIN 100,000U | Cream/Ointment | 30 | 90 | - | - |
| NYSTATIN/TRIAMCINOLONE | Cream | 15 | 45 | - | - |
| NYSTATIN/TRIAMCINOLONE | Cream | 30 | 90 | - | - |
| NYSTATIN/TRIAMCINOLONE | Ointment | 15 | 45 | - | - |

O

| | | | | | |
|-----------------|--------|----|-----|---|---|
| OXYBUTYNIN 5 MG | Tablet | 60 | 180 | - | - |
|-----------------|--------|----|-----|---|---|

P

| | | | | | |
|----------------------------|---------------------|-----|------|---|---|
| PAROXETINE 10 MG* | Tablet | 30 | 90 | - | - |
| PAROXETINE 20 MG* | Tablet | 30 | 90 | - | - |
| PENICILLIN VK 125 MG/5 ML | Solution | 200 | 600 | - | - |
| PENICILLIN VK 250 MG/5 ML | Solution | 100 | 300 | - | - |
| PENICILLIN VK 250 MG | Tablet | 28 | 84 | - | - |
| PHENAZOPYRIDINE 100 MG | Tablet | 6 | 18 | - | - |
| PHENAZOPYRIDINE 200 MG | Tablet | 30 | 90 | - | - |
| PILOCARPINE 1% | Ophthalmic Solution | 15 | 45 | - | - |
| PILOCARPINE 2% | Ophthalmic Solution | 15 | 45 | - | - |
| POLYMYXIN SULFATE/TMP * | Ophthalmic Solution | 10 | 30 | - | - |
| POTASSIUM CHLORIDE 10% | Liquid | 473 | 1419 | - | - |
| PRAVASTATIN 10 MG | Tablet | 30 | 90 | - | - |
| PRAVASTATIN 20 MG | Tablet | 30 | 90 | - | - |
| PRAVASTATIN 40 MG* | Tablet | 30 | 90 | - | - |
| PRAZOSIN HCL 1 MG | Capsule | 30 | 90 | - | - |
| PRAZOSIN HCL 2 MG* | Capsule | 30 | 90 | - | - |
| PRAZOSIN HCL 5 MG* | Capsule | 30 | 90 | - | - |
| PREDNISONE 2.5 MG | Tablet | 30 | 90 | - | - |
| PREDNISONE 5 MG | Dose Pak | 21 | 63 | - | - |
| PREDNISONE 5 MG* | Dose Pak | 48 | 144 | - | - |
| PREDNISONE 5 MG | Tablet | 30 | 90 | - | - |
| PREDNISONE 10 MG | Dose Pak | 21 | 63 | - | - |
| PREDNISONE 10 MG* | Dose Pak | 48 | N/A | - | - |
| PREDNISONE 10 MG | Tablet | 30 | 90 | - | - |
| PREDNISONE 20 MG | Tablet | 30 | 90 | - | - |
| PRENATAL RX * | Tablet | 30 | N/A | - | - |
| PROCHLORPERAZINE 10 MG | Tablet | 30 | 90 | - | - |
| PROMETHAZINE 6.25 MG/5 ML* | Syrup | 180 | 540 | - | - |

| | | | | | |
|---------------------|--------|-----|-----|---|---|
| PROMETHAZINE 25 MG* | Tablet | 12 | 36 | - | - |
| PROMETHAZINE DM | Syrup | 120 | 360 | - | - |
| PROPRANOLOL 10 MG | Tablet | 60 | 180 | - | - |
| PROPRANOLOL 20 MG | Tablet | 60 | 180 | - | - |
| PROPRANOLOL 40 MG | Tablet | 60 | 180 | - | - |
| PROPRANOLOL 80 MG | Tablet | 60 | 180 | - | - |

R

| | | | | | |
|-------------------|--------|----|-----|---|---|
| RANITIDINE 150 MG | Tablet | 60 | 180 | - | - |
| RANITIDINE 300 MG | Tablet | 30 | 90 | - | - |

S

| | | | | | |
|--------------------------|---------------------|-----|-----|----|-----|
| SELENIUM SULFIDE 2.5%* | Lotion | 120 | 360 | - | - |
| SILVER SULFADIAZINE 1%* | Cream | 50 | 150 | - | - |
| SMZ/TMP 200/40/5 ML* | Suspension | 120 | 360 | - | - |
| SMZ/TMP 400/80 MG | Tablet | 28 | 84 | - | - |
| SMZ/TMP DS 800/160 MG | Tablet | 20 | 60 | - | - |
| SODIUM FLUORIDE 0.5 MG* | Tablet | 120 | N/A | - | - |
| SOTALOL HCL 80 MG* | Tablet | 30 | 90 | - | - |
| SPIRONOLACTONE 25 MG* | Tablet | 30 | 90 | - | - |
| SPRINTEC 28-DAY* | Tablet | - | - | 28 | N/A |
| SULFACETAMIDE SODIUM 10% | Ophthalmic Solution | 15 | 45 | - | - |

T

| | | | | | | |
|-----------------------|---------------------|--------|-----|---|----|-----|
| TAMOXIFEN 10 MG | - | Tablet | - | - | 60 | 180 |
| TAMOXIFEN 20 MG | - | Tablet | - | - | 30 | 90 |
| TERAZOSIN 1 MG | Capsule | 30 | 90 | - | - | |
| TERAZOSIN 2 MG | Capsule | 30 | 90 | - | - | |
| TERAZOSIN 5 MG | Capsule | 30 | 90 | - | - | |
| TERAZOSIN 10 MG | Capsule | 30 | 90 | - | - | |
| TERBINAFINE 250 MG* | Tablet | 30 | 90 | - | - | |
| TETRACYCLINE 250 MG | Capsule | 60 | 180 | - | - | |
| TETRACYCLINE 500 MG | Capsule | 60 | 180 | - | - | |
| THIORIDAZINE 25 MG | Tablet | 30 | 90 | - | - | |
| THIORIDAZINE 50 MG | Tablet | 30 | 90 | - | - | |
| THIOTHIXENE 2 MG | Capsule | 30 | 90 | - | - | |
| TIMOLOL MALEATE 0.25% | Ophthalmic Solution | 5 | 15 | - | - | |

| | | | | | |
|-----------------------------|---------------------|-----|-----|----|-----|
| TIMOLOL MALEATE 0.5% | Ophthalmic Solution | 5 | 15 | - | - |
| TOBRAMYCIN 0.3% | Ophthalmic Solution | 5 | 15 | - | - |
| TRAZODONE 50 MG | Tablet | 30 | 90 | - | - |
| TRAZODONE 100 MG | Tablet | 30 | 90 | - | - |
| TRAZODONE 150 MG | Tablet | 30 | 90 | - | - |
| TRIAMCINOLONE 0.025% | Cream | 15 | 45 | - | - |
| TRIAMCINOLONE 0.025% | Cream | 80 | 240 | - | - |
| TRIAMCINOLONE 0.1% | Cream/Ointment | 15 | 45 | - | - |
| TRIAMCINOLONE 0.1% | Cream/Ointment | 80 | 240 | - | - |
| TRIAMCINOLONE 0.5% | Cream | 15 | 45 | - | - |
| TRIAMTERENE/HCTZ 37.5/25 MG | Capsule/Tablet | 30 | 90 | - | - |
| TRIAMTERENE/HCTZ 75/50 MG | Tablet | 30 | 90 | - | - |
| TRIHEXYPHENIDYL 2 MG | Tablet | 60 | 180 | - | - |
| TRIVENT DPC 6/2/15/5 ML* | Syrup | 120 | 360 | - | - |
| TRI-SPRINTEC 28-DAY* | Tablet | - | - | 28 | N/A |

V

| | | | | | |
|------------------|---------|----|----|---|-----|
| VENTOLIN HFA ® * | Inhaler | - | - | 8 | N/A |
| VERAPAMIL 80 MG | Tablet | 30 | 90 | - | - |
| VERAPAMIL 120 MG | Tablet | 30 | 90 | - | - |

W

| | | | | | |
|-----------------|--------|----|----|---|---|
| WARFARIN 1 MG | Tablet | 30 | 90 | - | - |
| WARFARIN 2 MG | Tablet | 30 | 90 | - | - |
| WARFARIN 2.5 MG | Tablet | 30 | 90 | - | - |
| WARFARIN 3 MG | Tablet | 30 | 90 | - | - |
| WARFARIN 4 MG | Tablet | 30 | 90 | - | - |
| WARFARIN 5 MG* | Tablet | 30 | 90 | - | - |
| WARFARIN 6 MG | Tablet | 30 | 90 | - | - |
| WARFARIN 7.5 MG | Tablet | 30 | 90 | - | - |
| WARFARIN 10 MG | Tablet | 30 | 90 | - | - |

\$4 prescriptions include up to a 30-day supply of covered drugs at commonly prescribed dosages. \$10 prescriptions include up to a 90-day supply of covered drugs at commonly prescribed dosages. Physician permission may be required to change a 30-day prescription to a 90-day prescription.

*These drugs may be priced higher in CA, HI, MN, MT, PA, RI, TN, WI, and WY. Please ask your Target Pharmacist for specific pricing in these states.



Free Antibiotics

Leading Antibiotics are now FREE at your Meijer Pharmacy—No Strings Attached!

"Rising health care costs are having a dramatic impact on families across the country, especially here in the Midwest. Our free antibiotic program is the next step Meijer is taking to lead the industry toward improving the health of our customers. It is all about delivering higher standards."

—Mark Murray, Meijer president



The program covers leading, oral generic antibiotics with a special focus on the prescriptions most often filled for children. The following are FREE with your doctor's prescription, regardless of insurance or co-pay:

- Amoxicillin
- Cephalexin
- SMZ-TMP
- Ciprofloxacin
- Ampicillin
- Penicillin VK
- Erythromycin

Prescription must be picked up at store in person. Maximum 14 day supply at normal oral dosages. Does not include extended release formulations. List may be subject to change. Not valid with any other offer.

What the Experts Say...

National health experts say that 40 percent of children who see a physician leave with a prescription. "When appropriately prescribed, antibiotics are the leading tools to treat sick kids," said Dr. Herman Gray, fellow, American Academy of Pediatrics and president, Children's Hospital of Michigan.



Get Free Pre-Natal Vitamins At Your Meijer Pharmacy!

"As a family-focused company, offering free pre-natal vitamins is just another way we can help the many families that make up our core customer base. Just as our free antibiotic program was designed to help our customers get healthy during these tough economic times, offering free pre-natal vitamins will help our customers stay healthy during a very important time in their lives."

--Nat Love, Vice President, Meijer Drugstore

The free pre-natal vitamin program launched on June 1, 2008 and features five leading brands of pre-natal vitamins. See a Meijer pharmacist for details.

It has been shown that pre-natal vitamins play an important role in healthy pregnancies and healthy babies. Through the years, these supplements have typically been prescribed for women who have become pregnant. However, many members of the medical community believe they also play an important role for women in the important months leading up to conception. Therefore, a large number of physicians now prescribe these vitamins for the months leading up to a patient's attempt to conceive.

Meijer's free pre-natal vitamin program comes on the heels of the company celebrating its milestone of filling two million free antibiotic prescriptions in April. The free antibiotic program, which launched in October 2006, has saved Meijer customers more than \$33 million.





\$9.99 for **90** days

400+ generic prescriptions



Health Savings Pass medication list

Sign up now to save on prescriptions. Plus – 10% off at MinuteClinic®.

ALLERGY QTY

- C-PHEN DROPS 90 ML
- CYPROHEPTADINE 4 MG TABLET 180
- FEXOFENADINE HCL 30 MG TABLET 90
- HYDROXYZINE 10 MG/5 ML SYRUP 360 ML
- LORATADINE 10 MG TABLET 90

ARTHRITIS & PAIN QTY

- ALLOPURINOL 100 MG, 300 MG TABLET 90
- BACLOFEN 10 MG TABLET 90
- CHLORZOXAZONE 500 MG TABLET 180
- CYCLOBENZAPRINE 5 MG, 10 MG TABLET 90
- DEXAMETHASONE 0.5 MG TABLET 90
- DEXAMETHASONE 0.75 MG TABLET 36
- DEXAMETHASONE 4 MG TABLET 18
- DICLOFENAC SOD 50 MG, 75 MG TABLET EC 180
- IBUPROFEN 100 MG/5 ML SUSPENSION* 360 ML
- IBUPROFEN 400 MG TABLET 270
- IBUPROFEN 600 MG TABLET 180
- IBUPROFEN 800 MG TABLET 90
- INDOMETHACIN 25 MG CAPSULE* 180
- INDOMETHACIN 50 MG CAPSULE 90
- KETOPROFEN 50 MG, 75 MG CAPSULE 90
- LIDOCAINE 2% VISCOUS SOLUTION 300 ML
- MELOXICAM 7.5 MG, 15 MG TABLET 90
- METHOCARBAMOL 500 MG TABLET 180
- NAPROXEN 250 MG TABLET 180
- NAPROXEN 375 MG, 500 MG TABLET* 180
- NAPROXEN SODIUM 275 MG, 550 MG TABLET 90
- PIROXICAM 10 MG, 20 MG CAPSULE 90
- TIZANIDINE HCL 2 MG, 4 MG TABLET 180
- TRAMADOL HCL 50 MG TABLET 180

ASTHMA QTY

- ALBUTEROL 0.83 MG/ML SOLUTION* . (75 VIALS) 225 ML
- ALBUTEROL 5 MG/ML SOLUTION 60 ML
- ALBUTEROL SULF 2 MG/5 ML SYRUP 360 ML
- ALBUTEROL SULFATE 2 MG TABLET 270
- ALBUTEROL SULFATE 4 MG TABLET 180
- IPRATROPIUM 0.02% SOLUTION* . . (75 VIALS) 187.5 ML
- THEOPHYLLINE 100 MG, 200 MG TABLET SA 180

CHOLESTEROL QTY

- LOVASTATIN 10 MG, 40 MG TABLET 90
- LOVASTATIN 20 MG TABLET* 90
- PRAVASTATIN SODIUM 10 MG, 20 MG TABLET 90
- PRAVASTATIN SODIUM 40 MG TABLET* 90

DIABETES QTY

- CHLORPROPAMIDE 100 MG TABLET* 90
- GLIMEPIRIDE 1 MG, 2 MG, 4 MG TABLET 90
- GLIPIZIDE 5 MG TABLET 90
- GLIPIZIDE 10 MG TABLET* 180
- GLIPIZIDE ER 5 MG TABLET 90
- GLYBURIDE 1.25 MG, 2.5 MG, 5 MG TABLET 90
- GLYBURIDE MICRO 1.5 MG, 3 MG, 6 MG TABLET 90
- GLYBURIDE-METFORMIN 5-500 MG TABLET 180
- METFORMIN HCL 500 MG, 850 MG TABLET 180
- METFORMIN HCL 1,000 MG TABLET* 180
- METFORMIN HCL ER 500 MG TABLET* 180

FLU IMMUNIZATION QTY

- AFLURIA Annual
- FLULAVAL Annual
- FLUZONE Annual
- FLUVIRIN Annual
- FLUARIX Annual

FUNGAL INFECTIONS QTY

- FLUCONAZOLE 100 MG, 200 MG TABLET 12
- NYSTATIN 100,000 UNITS/GM CREAM 90 GM
- NYSTATIN 100,000 UNITS/GM OINTMENT 90 GM
- TERBINAFINE HCL 250 MG TABLET* 30

GASTROINTESTINAL HEALTH QTY

- BELLADONNA-PHENOBARBITAL TABLET 180
- CIMETIDINE 300 MG, 400 MG TABLET 90
- CIMETIDINE 800 MG TABLET* 90
- DICYCLOMINE 10 MG CAPSULE 270
- DICYCLOMINE 20 MG TABLET 180
- FAMOTIDINE 20 MG TABLET 180
- FAMOTIDINE 40 MG TABLET 90
- LACTULOSE 10 GM/15 ML SOLUTION 720 ML
- METOCLOPRAMIDE 5 MG, 10 MG TABLET 180
- METOCLOPRAMIDE 5 MG/5 ML SYRUP 180 ML
- PROCHLORPERAZINE 5 MG, 10 MG TABLET 90
- PROMETHAZINE 12.5 MG TABLET 36
- PROMETHAZINE 25 MG TABLET* 36
- PROMETHAZINE 6.25 MG/5 ML SYRUP* 540 ML
- RANITIDINE 150 MG TABLET 180
- RANITIDINE 300 MG TABLET 90

GLAUCOMA & EYE CARE QTY

- ATROPINE 1% EYE DROPS 15 ML
- CYCLOPENTOLATE 1% EYE DROPS 45 ML
- FLURBIPROFEN 0.03% EYE DROPS 8 ML
- LEVOBUNOLOL 0.5% EYE DROPS 15 ML
- PILOCARPINE 1%, 2% EYE DROPS 45 ML
- POLYMYXIN B-TMP EYE DROPS* 30 ML
- TIMOLOL 0.25%, 0.5% EYE DROPS 15 ML

HEART HEALTH & BLOOD PRESSURE QTY

- AMILORIDE HCL-HCTZ 5-50 MG TABLET 90
- AMIODARONE HCL 200 MG TABLET 90
- ATENOLOL 25 MG, 50 MG, 100 MG TABLET 90
- ATENOLOL-CHLORTHALIDONE 50-25 MG, 100-25 MG TABLET 90
- BENAZEPRIL HCL 5 MG, 10 MG, 20 MG, 40 MG TABLET 90
- BENAZEPRIL-HCTZ 10-12.5 MG, 20-12.5 MG, 20-25 MG TABLET 90
- BISOPROLOL-HCTZ 2.5-6.25 MG, 5-6.25 MG, 10-6.25 MG TABLET 90
- BUMETANIDE 0.5 MG, 1 MG, 2 MG TABLET 90
- CAPTOPRIL 12.5 MG, 25 MG, 50 MG, 100 MG TABLET 180
- CARTIA XT 120 MG CAPSULE SA 90
- CARVEDILOL 3.125 MG, 6.25 MG, 12.5 MG TABLET 180
- CARVEDILOL 25 MG TABLET* 180
- CHLORTHALIDONE 25 MG, 50 MG TABLET 90
- CLONIDINE HCL 0.1 MG, 0.2 MG, 0.3 MG TABLET 90
- DIGOXIN 125 MCG, 250 MCG TABLET 90
- DILTIAZEM 30 MG, 60 MG TABLET 180
- DILTIAZEM 90 MG TABLET* 180
- DILTIAZEM 120 MG TABLET 90
- DOXAZOSIN MESYLATE 1 MG, 2 MG, 4 MG, 8 MG TABLET 90
- ENALAPRIL MALEATE 2.5 MG, 5 MG, 10 MG, 20 MG TABLET 90
- ENALAPRIL-HCTZ 5-12.5 MG, 10-25 MG TABLET 90
- FOSINOPRIL SODIUM 10 MG, 20 MG, 40 MG TABLET 90
- FUROSEMIDE 20 MG, 40 MG, 80 MG TABLET 90
- GUANFACINE 1 MG, 2 MG TABLET 90
- HYDRALAZINE 10 MG, 25 MG TABLET 90
- HYDROCHLOROTHIAZIDE 12.5 MG CAPSULE* 90
- HYDROCHLOROTHIAZIDE 25 MG, 50 MG TABLET 90
- INDAPAMIDE 1.25 MG, 2.5 MG TABLET 90

* These drugs may be priced higher in HI, MN, MT, PA, TN, and WI.

HEART HEALTH & BLOOD PRESSURE (continued) . . . QTY

| | |
|---|-----|
| ISOSORBIDE DN 5 MG, 10 MG, 20 MG TABLET | 270 |
| ISOSORBIDE MN 20 MG TABLET | 90 |
| ISOSORBIDE MN 30 MG, 120 MG TABLET SA | 90 |
| ISOSORBIDE MN 60 MG TABLET ER | 90 |
| LABETALOL HCL 100 MG TABLET | 180 |
| LISINAPRIL 2.5 MG, 5MG, 10 MG, 20 MG, 30 MG, 40 MG TABLET | 90 |
| LISINAPRIL-HCTZ 10-12.5 MG TABLET | 90 |
| LISINAPRIL-HCTZ 20-12.5 MG, 20-25 MG TABLET* | 90 |
| METHYLDOPA 250 MG TABLET* | 180 |
| METHYLDOPA 500 MG TABLET* | 90 |
| METOLAZONE 2.5 MG, 5 MG TABLET | 90 |
| METOPROLOL TARTRATE 25 MG, 50 MG TABLET | 180 |
| METOPROLOL TARTRATE 100 MG TABLET* | 180 |
| NADOLOL 20 MG, 40 MG TABLET | 90 |
| PINDOLOL 5 MG, 10 MG TABLET | 90 |
| PRAZOSIN 1 MG, 2 MG, 5 MG CAPSULE | 90 |
| PROPRANOLOL 10 MG, 20 MG, 40 MG, 80 MG TABLET | 180 |
| PROPRANOLOL-HCTZ 40-25 MG, 80-25 MG TABLET | 180 |
| QUINAPRIL 5 MG, 10 MG, 20 MG, 40 MG TABLET | 90 |
| SOTALOL 80 MG TABLET* | 90 |
| SPIRONOLACTONE 25 MG TABLET* | 90 |
| TERAZOSIN 1 MG, 2 MG, 5 MG, 10 MG CAPSULE | 90 |
| TORSEMIDE 10 MG, 20 MG TABLET | 90 |
| TRIAMTERENE-HCTZ 37.5-25 MG CAPSULE | 90 |
| TRIAMTERENE-HCTZ 37.5-25 MG, 75-50 TABLET | 90 |
| VERAPAMIL 80 MG, 120 MG TABLET | 90 |
| VERAPAMIL 180 MG, 240 MG TABLET SA | 90 |
| WARFARIN SODIUM 1 MG, 2 MG, 2.5 MG, 3 MG, 4 MG, 6 MG, 7.5 MG, 10 MG TABLET | 90 |
| WARFARIN SODIUM 5 MG TABLET* | 90 |

MENTAL HEALTH QTY

| | |
|--|-----|
| AMITRIPTYLINE HCL 10 MG, 25 MG, 50 MG, 75 MG, 100 MG, 150 MG TABLET | 90 |
| BENZTROPINE MES 0.5 MG, 1 MG, 2 MG TABLET | 90 |
| BUSPIRONE HCL 10 MG TABLET* | 180 |
| BUSPIRONE HCL 5 MG, 15 MG TABLET | 180 |
| CARBAMAZEPINE 200 MG TABLET* | 180 |
| CHLORPROMAZINE 25 MG, 50 MG TABLET | 180 |
| CITALOPRAM HBR 10 MG, 20 MG, 40 MG TABLET | 90 |
| DOXEPIN 10 MG, 25 MG, 50 MG, 75 MG, 100 MG CAPSULE | 90 |
| FLUOXETINE HCL 10 MG TABLET* | 90 |
| FLUOXETINE HCL 10 MG, 20 MG, 40 MG CAPSULE | 90 |
| FLUPHENAZINE 1 MG, 5 MG TABLET | 90 |
| GABAPENTIN 100 MG CAPSULE | 270 |
| HALOPERIDOL 0.5 MG, 1 MG, 2 MG, 5 MG TABLET | 90 |
| HYDROXYZINE PAM 25 MG CAPSULE | 180 |
| IMIPRAMINE HCL 10 MG, 25 MG TABLET | 180 |

| | |
|--|-----|
| LITHIUM CARBONATE 300 MG CAPSULE* | 270 |
| MIRTAZAPINE 15 MG TABLET | 90 |
| NORTRIPTYLINE HCL 10 MG, 25 MG, 75 MG CAPSULE | 90 |
| PAROXETINE HCL 10 MG, 20 MG TABLET* | 90 |
| PAROXETINE HCL 30 MG, 40 MG TABLET | 90 |
| PERPHEN-AMITRIP 2 MG-10 MG, 2 MG-25 MG, 4 MG-25 MG TABLET | 180 |
| SERTRALINE HCL 25 MG TABLET | 90 |
| THIORIDAZINE 10 MG, 25MG, 50 MG TABLET | 90 |
| THIOTHIXENE 2 MG CAPSULE | 90 |
| TRAZODONE 50 MG, 100 MG, 150 MG TABLET | 90 |
| TRIHEXYPHENIDYL 2 MG TABLET | 180 |
| ZONISAMIDE 25 MG CAPSULE | 180 |

OTHER MEDICAL CONDITIONS QTY

| | |
|---|---------|
| CHLORHEXIDINE 0.12% RINSE | 1440 ML |
| CYTRA-2 ORAL SOLUTION | 480 ML |
| CYTRA-K ORAL SOLUTION | 480 ML |
| HYDROCORTISONE 20 MG TABLET | 90 |
| ISONIAZID 300 MG TABLET | 90 |
| MECLIZINE 12.5 MG TABLET | 180 |
| MEGESTROL 20 MG TABLET* | 90 |
| METHYLPREDNISOLONE 4 MG TABLET | 90 |
| OXYBUTYNYN 5 MG TABLET | 180 |
| PREDNISOLONE 5 MG TABLET | 90 |
| PREDNISONE 1 MG, 2.5 MG, 5 MG, 10 MG TABLET | 90 |
| PREDNISONE 5 MG, 10 MG TABLET-DOSEPAK* | 63 |

SKIN CONDITIONS QTY

| | |
|--|--------|
| BETAMETHASONE DP 0.05% CREAM | 135 GM |
| BETAMETHASONE DP 0.05% OINTMENT | 45 GM |
| BETAMETHASONE VA 0.1% CREAM | 135 GM |
| BETAMETHASONE VA 0.1% LOTION | 180 ML |
| BETAMETHASONE VA 0.1% OINTMENT | 135 GM |
| CLINDAMYCIN PH 1% SOLUTION | 90 ML |
| DESONIDE 0.05% CREAM | 45 GM |
| FLUOCINOLONE 0.01% SOLUTION | 180 ML |
| FLUOCINOLONE 0.025% CREAM | 45 GM |
| FLUOCINOLONE 0.025% OINTMENT | 45 GM |
| FLUOCINONIDE 0.05% CREAM | 90 GM |
| HYDROCORTISONE 1%, 2.5% CREAM | 90 GM |
| HYDROCORTISONE 2.5% OINTMENT | 90 GM |
| SELENIUM 2.5% LOTION-SHAMPOO* | 360 ML |
| TRIAMCINOLONE 0.025%, 0.1% CREAM | 240 GM |
| TRIAMCINOLONE 0.5% GM CREAM | 45 GM |
| TRIAMCINOLONE 0.1% OINTMENT | 240 GM |
| TRIAMCINOLONE 0.5% OINTMENT | 45 GM |

THYROID CONDITIONS QTY

| | |
|--|----|
| LEVOTHYROXINE 25 MCG, 50 MCG, 75 MCG, 88 MCG, 100 MCG, 112 MCG, 125 MCG, 137 MCG, 150 MCG TABLET | 90 |
| LEVOTHYROXINE 175 MCG, 200 MCG TABLET* | 90 |

VIRUSES QTY

| | |
|------------------------------------|----|
| ACYCLOVIR 200 MG CAPSULE | 90 |
|------------------------------------|----|

VITAMINS & NUTRITIONAL HEALTH QTY

| | |
|--|---------|
| FOLIC ACID 1 MG TABLET | 90 |
| KLOR-CON 8 MEQ, 10 MEQ TABLET | 90 |
| KLOR-CON M10, M20 TABLET | 90 |
| MAG 64 TABLET SA* | 180 |
| MAGNESIUM OXIDE 400 MG TABLET | 90 |
| MULTIVITA BETS-FL-FE 1 MG TABLET | 90 |
| NATALCARE PIC TABLET (PRENATAL RX 1 TABLET)* | 90 |
| PHOSPHA 250 NEUTRAL TABLET | 90 |
| POLYVIT-IRON-FL 0.25 MG/ML DROPS | 150 ML |
| POTASSIUM CHLORIDE 10% LIQUID S-F | 1440 ML |
| POTASSIUM CHLORIDE 20% LIQUID S-F | 960 ML |
| PRENATABS RX TABLET | 90 |
| PRENATAL PLUS TABLET | 90 |
| PRENATAL RX TABLET* | 90 |
| SOD FLUORIDE 0.5MG(1.1MG), 1MG(2.2MG)TABLET | 90 |
| SODIUM FLUORIDE DENTAL RINSE | 480 ML |
| SODIUM FLUORIDE 0.5 MG/ML DROPS | 150 ML |
| TRI-VIT-FLUOR-IRON 0.25 MG/ML DROPS | 150 ML |
| ULTRA NATALCARE TABLET | 90 |
| VITACON FORTE CAPSULE | 90 |

WOMEN'S HEALTH QTY

| | |
|---|----|
| ESTRADIOL 0.5 MG, 1 MG, 2 MG TABLET | 90 |
| ESTROPIPATE 0.625(0.75 MG) TABLET | 90 |
| ESTROPIPATE 1.25(1.5 MG) TABLET* | 90 |
| MEDROXYPROGESTERONE 10 MG TABLET | 30 |
| MEDROXYPROGESTERONE 2.5 MG, 5 MG TABLET | 90 |

WOMEN'S HEALTH (\$23.99) QTY

| | |
|--|-----|
| ALENDRONATE SODIUM 35 MG, 70 MG TABLET | 12 |
| TAMOXIFEN 10 MG TABLET | 180 |
| TAMOXIFEN 20 MG TABLET | 90 |

* These drugs may be priced higher in HI, MN, MT, PA, TN, and WI.

This program is NOT health insurance. A \$10 per person enrollment fee is required annually. You may cancel your membership within 30 days from receipt of your membership card and materials, for a full refund. MinuteClinic® discount not available in FL. Void where prohibited by law. Prices may vary in certain states. \$9.99 pricing based on commonly prescribed doses. List is subject to change without notice. For complete terms and conditions, see store for details.

It's easy to enroll: in-store, online at www.cvs.com/healthsavingspass, or by calling **1-888-616-CARE (2273)**

Walgreens Prescription Savings Club*

Over 400 generic medications value priced at
\$12 for a 90-day supply (That's less than \$1 per week)

\$9.99 for a 30-day supply!

Antifungal

| Drug Name | \$9.99 Qty. | \$12 Qty. |
|------------------------|-------------|-----------|
| FLUCONAZOLE 150MG TABS | 1 | 3 |
| TERBINAFINA 250MG TABS | 30 | 90 |

Antiviral Treatments

| Drug Name | \$9.99 Qty. | \$12 Qty. |
|--------------------------|-------------|-----------|
| ACYCLOVIR 200MG CAPSULES | 60 | 180 |
| ACYCLOVIR 400MG CAPSULES | 60 | 180 |
| ACYCLOVIR 800MG CAPSULES | 35 | 105 |

Arthritis or Pain

| Drug Name | \$9.99 Qty. | \$12 Qty. |
|-------------------------------------|-------------|-----------|
| ALLOPURINOL 100MG, 300MG TABLETS | 60 | 180 |
| BACLOFEN 10MG TABS | 90 | 270 |
| CHLORZOXAZONE 500MG TABS | 60 | 180 |
| CYCLOBENZAPRINE 5MG, 10MG TABS | 30 | 90 |
| DICLOFENAC POTASSIUM 50MG TABS | 60 | 180 |
| ETODOLAC ER 400 TABS | 30 | 90 |
| IBUPROFEN 100MG/5ML ORAL SUSP | 120 | 360 |
| IBUPROFEN 400MG TABS | 90 | 270 |
| IBUPROFEN 600MG, 800MG TABS | 60 | 180 |
| INDOMETHACIN 25MG CAPS | 60 | 180 |
| INDOMETHACIN 50MG CAPS | 30 | 90 |
| LIDOCAINE VISCOUS 2% ORAL SOL 100ML | 100 | 300 |
| MELOXICAM 7.5MG, 15MG TABS | 30 | 90 |
| NAPROXEN 250MG, 375MG, 500MG TABS | 60 | 180 |
| NAPROXEN SODIUM 275MG, 550MG TABS | 30 | 90 |
| PIROXICAM 10MG CAPS | 30 | 90 |
| PIROXICAM 20MG CAPS | 30 | 90 |
| TIZANIDINE 2MG TABS | 60 | 180 |

Asthma

| Drug Name | \$9.99 Qty. | \$12 Qty. |
|--------------------------------------|-------------|-----------|
| ALBUTEROL 0.083% INH SOLN 25X3ML | 75 | 225 |
| ALBUTEROL 0.5% INH SOL 20ML | 20 | 60 |
| ALBUTEROL SULFATE 2MG TABS | 90 | 270 |
| ALBUTEROL SULFATE 4MG TABS | 60 | 180 |
| ALBUTEROL SULFATE SYRUP (2MG/5ML) | 120 | 360 |
| IPRATROPIUM INHAL. SOLUTION 25x2.5ML | 75 | 225 |

Blood Pressure and Heart Health

| Drug Name | \$9.99 Qty. | \$12 Qty. |
|---------------------------------------|-------------|-----------|
| AMILORIDE 5MG / HCTZ 50MG TABS | 30 | 90 |
| AMIODARONE HCL 200MG TABS | 30 | 90 |
| ATENOLOL 25MG, 50MG TABS | 60 | 180 |
| ATENOLOL 100MG TABS | 30 | 90 |
| ATENOLOL 100MG/CHLORTHAL 25MG TABS | 30 | 90 |
| ATENOLOL/CHLORTHALIDONE 50/25 TABS | 30 | 90 |
| BENAZEPRIL 5MG, 10MG, 20MG, 40MG TABS | 30 | 90 |
| BENAZEPRIL HCTZ 10/12.5, 20/12.5 TABS | 30 | 90 |
| BENAZEPRIL HCTZ 20/25MG TABS | 30 | 90 |
| BISOPROLOL FUMARATE 5MG TABS | 30 | 90 |
| BISOPROLOL/HCTZ 2.5MG/6.25MG TABS | 30 | 90 |

Blood Pressure and Heart Health (Cont.)

| Drug Name | \$9.99 Qty. | \$12 Qty. |
|--|-------------|-----------|
| BISOPROLOL/HCTZ 5MG/6.25MG TABS | 30 | 90 |
| BISOPROLOL/HCTZ 10MG/6.25MG TABS | 30 | 90 |
| BUMETANIDE 0.5MG, 1MG, 2MG TABS | 30 | 90 |
| CAPTAPRIL 12.5MG, 25MG TABS | 60 | 180 |
| CAPTAPRIL 50MG, 100MG TABS | 60 | 180 |
| CAPTAPRIL/HCTZ 25/15 TABS | 60 | 180 |
| CAPTAPRIL/HCTZ 25/25 TABS | 60 | 180 |
| CAPTAPRIL/HCTZ 50/15 TABS | 60 | 180 |
| CAPTAPRIL/HCTZ 50/25 TABS | 60 | 180 |
| CARVEDILOL 3.125MG, 6.25MG TABS | 60 | 180 |
| CARVEDILOL 12.5MG, 25MG TABS | 60 | 180 |
| CLONIDINE 0.1MG, 0.2MG, 0.3 MG TABS | 60 | 180 |
| CHLORTHALIDONE 25MG, 50MG TABS | 30 | 90 |
| DIGOXIN 0.125MG, 0.25MG TABS | 30 | 90 |
| DILTIAZEM 30MG, 60MG, 90MG TABS | 60 | 180 |
| DILTIAZEM 120MG TABS | 30 | 90 |
| DOXAZOSIN 1MG, 2MG, 4MG, 8MG TABS | 30 | 90 |
| ENALAPRIL 2.5MG, 5MG, 10MG, 20MG TABS | 60 | 180 |
| ENALAPRIL-HCTZ 10-25MG TABS | 30 | 90 |
| ENALAPRIL-HCTZ 5-12.5MG TABS | 60 | 180 |
| FOSINOPRIL 10MG TABS | 30 | 90 |
| FOSINOPRIL 20MG TABS | 30 | 90 |
| FOSINOPRIL 40MG TABS | 30 | 90 |
| FUROSEMIDE 80MG TABS | 30 | 90 |
| GUANFACINE 1 MG, 2MG TABS | 30 | 90 |
| HYDRALAZINE 10MG, 25MG TABS | 60 | 180 |
| HYDROCHLOROTHIAZIDE 12.5MG CAPS | 30 | 90 |
| HYDROCHLOROTHIAZIDE 25MG, 50MG TABS | 30 | 90 |
| INDAPAMIDE 1.25MG, 2.5MG TABS | 30 | 90 |
| ISOSORBIDE DINITRATE 5MG ORAL TABS | 90 | 270 |
| ISOSORBIDE DINITRATE 10MG ORAL TABS | 90 | 270 |
| ISOSORBIDE DINITRATE 20MG ORAL TABS | 90 | 270 |
| ISOSORBIDE MONONITRATE 10MG, 20MG TABS | 60 | 180 |
| LABETALOL 100MG TABS | 60 | 180 |
| LABETALOL 200MG TABS | 60 | 180 |
| LISINAPRIL 2.5MG, 5MG, 10MG TABS | 30 | 90 |
| LISINAPRIL 20MG, 30MG, 40MG TABS | 30 | 90 |
| LISINAPRIL-HCTZ 10/12.5MG TABS | 30 | 90 |
| LISINAPRIL-HCTZ 20/12.5MG TABS | 30 | 90 |
| LISINAPRIL-HCTZ 20/25MG TABS | 30 | 90 |
| METOLAZONE 2.5MG, 5MG TABS | 30 | 90 |
| METOLAZONE 10MG TABS | 30 | 90 |
| METOPROLOL (TARTRATE) 25MG TABS | 60 | 180 |
| METOPROLOL (TARTRATE) 50MG TABS | 60 | 180 |
| METOPROLOL (TARTRATE) 100MG TABS | 60 | 180 |
| NADOLOL 20MG, 40MG, 80MG TABS | 30 | 90 |
| NITROGLYCERIN 2.5MG S.R. CAPS | 30 | 90 |
| NITROGLYCERIN 6.5MG S.R. 100 | 30 | 90 |
| PINDOLOL 5MG TABS | 60 | 180 |
| PRazosin 1MG CAPS | 30 | 90 |
| PRazosin 2MG, 5MG CAPS | 60 | 180 |
| PROPRANOLOL 10MG, 20MG TABS | 60 | 180 |
| PROPRANOLOL 40MG, 80MG TABS | 60 | 180 |
| QUINAPRIL 5MG, 10MG, 20MG, 40MG TABS | 30 | 90 |
| SOTALOL 80MG, 120MG TABS | 60 | 180 |
| SOTALOL AF 80MG TABS | 60 | 180 |
| SPIRONOLACTONE 25MG TABS | 30 | 90 |
| SPIRONOLACTONE 50MG TABS | 30 | 90 |
| SPIRONOLACTONE 25MG W/HCTZ 25MG TABS | 30 | 90 |

Blood Pressure and Heart Health (Cont.)

| Drug Name | \$9.99 Qty. | \$12 Qty. |
|--|-------------|-----------|
| TERAZOSIN 1MG, 2MG, 5MG, 10MG CAPS | 30 | 90 |
| TORSEMIDE 10MG, 20MG TABS | 30 | 90 |
| TRANDOLAPRIL 2MG TABS | 30 | 90 |
| TRANDOLAPRIL 4MG TABS | 30 | 90 |
| TRIAMTERENE 37.5MG/ HCTZ 25MG CAPS OR TABS | 30 | 90 |
| TRIAMTERENE 75MG/ HCTZ 50MG TABS | 30 | 90 |
| VERAPAMIL 80MG, 120MG TABS | 30 | 90 |
| VERAPAMIL ER 180MG, 240MG TABS | 30 | 90 |
| WARFARIN SOD 1MG, 2MG, 2.5MG TABS | 30 | 90 |
| WARFARIN SOD 3MG, 4MG, 5MG TABS | 30 | 90 |
| WARFARIN SOD 6MG, 7.5MG, 10MG TABS | 30 | 90 |

Cholesterol

| Drug Name | \$9.99 Qty. | \$12 Qty. |
|-----------------------------------|-------------|-----------|
| LOVASTATIN 10MG, 20MG, 40MG TABS | 30 | 90 |
| PRAVASTATIN 10MG, 20MG, 40MG TABS | 30 | 90 |

Cough/Cold/Allergy

| Drug Name | \$9.99 Qty. | \$12 Qty. |
|--------------------------------------|-------------|-----------|
| BENZONATATE 100MG CAPS | 30 | 90 |
| C-PHEN DM DROPS | 30 | 90 |
| C-PHEN DROPS 30ML | 30 | 90 |
| C-PHEN DM SYRUP | 120 | 360 |
| C-PHEN SYRUP | 120 | 360 |
| CYPROHEPTADINE 4MG TABS | 60 | 180 |
| LORATADINE 10MG TABS | 30 | 90 |
| PROMETHAZINE 6.25 MG/5ML SYRUP PLAIN | 180 | 540 |

Diabetes

| Drug Name | \$9.99 Qty. | \$12 Qty. |
|--------------------------------------|-------------|-----------|
| CHLORPROPAMIDE 100MG TABS | 30 | 90 |
| GLIMEPIRIDE 1MG, 2MG, 4MG TABS | 30 | 90 |
| GLIPIZIDE 5MG TABS | 30 | 90 |
| GLIPIZIDE 10MG TABS | 60 | 180 |
| GLYBURIDE 1.25MG, 2.5MG, 5MG TABS | 30 | 90 |
| GLYBURIDE MICRO 1.5MG, 3MG, 6MG TABS | 30 | 90 |
| GLYBURIDE/METFORMIN 1.25/250MG TABS | 60 | 180 |
| GLYBURIDE/METFORMIN 2.5/500MG TABS | 60 | 180 |
| METFORMIN 500MG, 850MG, 1000MG TABS | 90 | 270 |
| METFORMIN ER 500MG 24HR TABS | 60 | 180 |

Eye Care

| Drug Name | \$9.99 Qty. | \$12 Qty. |
|-------------------------------------|-------------|-----------|
| ERYTHROMYCIN OPHTH OINT 3.5GM | 3.5 | 10.5 |
| GENTAMICIN 0.3% OPHTH SOLN 5ML | 5 | 15 |
| LEVOBUNOLOL 0.5% OPHTH SOLN 5ML | 5 | 15 |
| NEO/POLY/DEX OPHTH SUSP 5ML | 5 | 15 |
| NEO/POLY/DEXAMETH OPHTH OINT. 3.5GM | 3.5 | 10.5 |
| PILOCARPINE 1%, 2% OPHTH SOLN 5ML | 15 | 45 |
| POLYMYXIN-B/TRIMETHOPRIM-OPHTH SOLN | 10 | 30 |
| SULFACETAMIDE NA 10% OPH SOLN 15ML | 15 | 45 |
| TIMOLOL MALEATE .25% OPHTH SOLN 5ML | 5 | 15 |
| TIMOLOL MALEATE .5% OPHTH SOLN 5ML | 5 | 15 |
| TOBRAMYCIN 0.3% OPH SOL 5ML | 5 | 15 |

*Membership Fee required (\$20 individual or \$35 family per year).
 This program does not constitute insurance.

Gastrointestinal Health

| Drug Name | \$9.99 Qty. | \$12 Qty. |
|-------------------------------------|-------------|-----------|
| BELLADONNA ALKALOIDS W/PB TABS | 60 | 180 |
| CIMETIDINE 300MG, 400MG, 800MG TABS | 60 | 180 |
| DICYCLOMINE 10MG CAPS | 90 | 270 |
| DICYCLOMINE 20MG TABS | 60 | 180 |
| ENULOSE SYRUP (10GM/15ML) | 237 | 711 |
| FAMOTIDINE 20MG TABS | 60 | 180 |
| FAMOTIDINE 40MG TABS | 30 | 90 |
| METOCLOPRAMIDE 5MG, 10MG TABS | 60 | 180 |
| METOCLOPRAMIDE HCL 5MG/5ML SYRUP | 60 | 180 |
| PROMETHAZINE 12.5 MG, 25MG TABS | 12 | 36 |
| PROMETHAZINE 50MG TABS | 60 | 180 |
| PROMETHEGAN 25MG SUPPOSITORIES | 12 | 36 |
| RANITIDINE 150MG TABS OR CAPS | 60 | 180 |
| RANITIDINE 300MG TABS OR CAPS | 30 | 90 |

Infectious Treatments

| Drug Name | \$9.99 Qty. | \$12 Qty. |
|-------------------------------------|-------------|-----------|
| AMOXICILLIN 125MG/5ML SUSP 150ML | 150 | 450 |
| AMOXICILLIN 200MG/5ML SUSP 100ML | 100 | 300 |
| AMOXICILLIN 250MG, 500MG CAPS | 30 | 90 |
| AMOXICILLIN 250MG/5ML SUSP 150ML | 150 | 450 |
| AMOXICILLIN 400MG/5ML SUSP 100ML | 100 | 300 |
| AMOXICILLIN 400MG/5ML SUSP 50ML | 50 | 150 |
| CEPHALEXIN 250MG CAPS | 28 | 84 |
| CEPHALEXIN 250MG/5ML SUSP 100ML | 100 | 300 |
| CEPHALEXIN 500MG CAPS | 30 | 90 |
| CIPROFLOXACIN 250MG TABS | 14 | 42 |
| CIPROFLOXACIN 500MG TABS | 20 | 60 |
| DOXYCYCLINE HYCLATE 50MG CAPS | 30 | 90 |
| DOXYCYCLINE HYCLATE 100MG CAPS | 20 | 60 |
| DOXYCYCLINE HYCLATE 100MG TABS | 20 | 60 |
| ERYTHROMYCIN ES 200MG/5ML SUSP | 120 | 360 |
| METRONIDAZOLE 250MG TABS | 28 | 84 |
| METRONIDAZOLE 500MG TABS | 14 | 42 |
| PENICILLIN VK 125MG/5ML SOLN 200ML | 200 | 600 |
| PENICILLIN VK 250MG TABS | 30 | 90 |
| PENICILLIN VK 250MG/5ML SOLN 100ML | 100 | 300 |
| PENICILLIN VK 500MG TABS | 20 | 60 |
| SMZ/TMP REGULAR STRENGTH TABS | 28 | 84 |
| SULFAMETH/TRIMETHOPRIM 800/160 TABS | 20 | 60 |
| SULFAMETH-TRIMETH SUSP (GRAPE) | 150 | 450 |
| TETRACYCLINE 250MG, 500MG CAPS | 60 | 180 |

Mental Health

| Drug Name | \$9.99 Qty. | \$12 Qty. |
|------------------------------------|-------------|-----------|
| AMITRIPTYLINE 10MG, 25MG TABS | 30 | 90 |
| AMITRIPTYLINE 50MG, 75MG TABS | 30 | 90 |
| AMITRIPTYLINE 100MG, 150MG TABS | 30 | 90 |
| BENZTROPINE 0.5MG TABS | 30 | 90 |
| BENZTROPINE 1MG TABS | 60 | 180 |
| BENZTROPINE 2MG TABS | 30 | 90 |
| BUPROPION 75MG TABS | 60 | 180 |
| BUSPIRONE 5MG, 10MG, 15MG TABS | 60 | 180 |
| CARBAMAZEPINE 100MG CHEWABLE TABS | 120 | 360 |
| CARBAMAZEPINE 200MG TABS | 100 | 300 |
| CITALOPRAM 10MG, 20MG, 40MG TABS | 30 | 90 |
| DOXEPIN 10MG, 25MG, 50MG CAPS | 30 | 90 |
| DOXEPIN 75MG, 100MG CAPS | 30 | 90 |
| FLUOXETINE 10MG, 20MG CAPS OR TABS | 30 | 90 |
| FLUOXETINE 40MG CAPS | 30 | 90 |
| FLUPHENAZINE 1MG TABS | 60 | 180 |
| FLUPHENAZINE 2.5MG, 5MG TABS | 30 | 90 |
| GABAPENTIN 100MG CAPS | 90 | 270 |
| HALOPERIDOL 0.5MG TABS | 60 | 180 |
| HALOPERIDOL 1MG, 2MG, 5MG TABS | 30 | 90 |

Mental Health (Cont.)

| Drug Name | \$9.99 Qty. | \$12 Qty. |
|-----------------------------------|-------------|-----------|
| HALOPERIDOL 0.5MG TABS | 60 | 180 |
| HALOPERIDOL 1MG, 2MG, 5MG TABS | 30 | 90 |
| IMIPRAMINE 10MG, 25MG TABS | 60 | 180 |
| LITHIUM CARBONATE 300MG CAPS | 90 | 270 |
| MIPRAMINE 50MG TABS | 30 | 90 |
| MIRTAZAPINE 15MG, 30MG TABS | 30 | 90 |
| NORTRIPTYLINE 10MG, 25MG CAPS | 30 | 90 |
| NORTRIPTYLINE 50MG CAPS | 60 | 180 |
| NORTRIPTYLINE 75MG TABS | 30 | 90 |
| PAROXETINE 10MG, 20MG TABS | 30 | 90 |
| PRIMIDONE 50MG TABS | 60 | 180 |
| PROCHLORPERAZINE 10MG TABS | 30 | 90 |
| SERTRALINE 25MG TABS | 30 | 90 |
| THIORIDAZINE 10MG TABS | 60 | 180 |
| THIORIDAZINE 25MG, 50MG TABS | 30 | 90 |
| THIOTHIXENE 2MG CAPS | 60 | 180 |
| TRAZODONE 50MG, 100MG, 150MG TABS | 30 | 90 |
| TRIHENXYPHENIDYL 2MG TABS | 60 | 180 |
| TRIFLUOPERAZINE 1MG, 2MG TABS | 60 | 180 |
| TRIFLUOPERAZINE 5MG, 10MG TABS | 60 | 180 |

Skin Conditions

| Drug Name | \$9.99 Qty. | \$12 Qty. |
|----------------------------------|-------------|-----------|
| BETAMETHASONE DIP 0.05% CRM | 15 | 45 |
| BETAMETHASONE VAL 0.1% CRM | 15 | 45 |
| BETAMETHASONE VAL 0.1% LOTION | 60 | 180 |
| BETAMETHASONE VAL 0.1% OINT | 45 | 135 |
| ERYTHROMYCIN 2% TOPICAL SOLN | 60 | 180 |
| FLUOCINOLONE ACET 0.01% SOLN | 60 | 180 |
| FLUOCINONIDE 0.05% CREAM | 30 | 90 |
| GENTAMICIN 0.1% CREAM OR OINT | 15 | 45 |
| HYDROCORTISONE 1%, 2.5% CREAM | 30 | 90 |
| NYSTATIN CREAM OR OINT | 30 | 90 |
| NYSTATIN/TRIAMCINOLONE CREAM | 15 | 45 |
| NYSTATIN/TRIAMCINOLONE CREAM | 30 | 90 |
| SELENIUM SULFIDE 2.5% SHAMPOO | 118 | 354 |
| TRIAMCINOLONE 0.025% CREAM | 15 | 45 |
| TRIAMCINOLONE 0.025% CREAM | 80 | 240 |
| TRIAMCINOLONE 0.1% CREAM OR OINT | 90 | 270 |
| TRIAMCINOLONE 0.5% CREAM | 15 | 45 |

Thyroid Conditions

| Drug Name | \$9.99 Qty. | \$12 Qty. |
|---------------------------------|-------------|-----------|
| LEVOTHYROXINE TABS ALL STRENGTH | 30 | 90 |
| METHIMAZOLE 5MG, 10MG TABS | 30 | 90 |
| PROPYLTHIOURACIL 50MG TABS | 60 | 180 |

Vitamins and Nutritional Health

| Drug Name | \$9.99 Qty. | \$12 Qty. |
|--------------------------------------|-------------|-----------|
| KLOR-CON 10MEQ TABS | 30 | 90 |
| KLOR-CON 8MEQ SUST-RELEASE TABS | 60 | 180 |
| KLOR-CON M10 ER TABS | 30 | 90 |
| MULTI-VITA-F 0.25MG, 0.5MG CHEW TABS | 30 | 90 |
| MULTIVITS W/FL 1MG & IRON CHEW TAB | 30 | 90 |
| NATALCARE GT TABS | 30 | 90 |
| NATALCARE PLUS TAB (1MG FOLIC ACID) | 30 | 90 |
| NATATAB FA TABS | 30 | 90 |
| POLY-VIT W/FLOR 0.5 MG/ML DROPS | 50 | 150 |
| POTASSIUM CHLORIDE 10% LIQ | 473 | 1,419 |
| RENA-VITE RX TABS | 30 | 90 |
| SODIUM FLUORIDE .25 CHEW TABS | 120 | 360 |
| SODIUM FLUORIDE .5 CHEW TABS | 30 | 90 |
| TRI-VIT/FE FL .25MG DROPS 50ML | 50 | 150 |
| VITAMIN D 50000IU CAPS | 4 | 12 |

Women's Health

| Drug Name | \$9.99 Qty. | \$12 Qty. |
|-------------------------------------|-------------|-----------|
| CLOMIPHENE CITRATE 50MG TABS | 5 | 15 |
| ESTRADIOL 0.5MG, 1MG, 2MG TABS | 30 | 90 |
| ESTROPIPATE 0.625MG (0.75MG) TABS | 30 | 90 |
| ESTROPIPATE 1.5MG (1.25MG) TABS | 30 | 90 |
| MEDROXYPROGESTERONE 2.5MG, 5MG TABS | 30 | 90 |
| MEDROXYPROGESTERONE 10MG TABS | 10 | 30 |

Other

| Drug Name | \$9.99 Qty. | \$12 Qty. |
|-------------------------------------|-------------|-----------|
| ANUCORT-HC 25MG RECTAL SUPPOS. 12'S | 12 | 36 |
| CHLORHEXIDINE ORAL RINSE 473ML | 473 | 1,419 |
| CYTRA-2 SOLUTION | 473 | 1,419 |
| DEXAMETHASONE 0.5MG TABS | 60 | 180 |
| DEXAMETHASONE 0.75MG TABS | 12 | 36 |
| DEXAMETHASONE 4MG TABS | 30 | 90 |
| MEGESTROL ACETATE 20MG TABS | 30 | 90 |
| METHYLPREDNISOLONE 4MG DOSPAK 21'S | 21 | 63 |
| METHYLPREDNISOLONE 4MG TABS | 60 | 180 |
| OXYBUTYININ 5MG TABS | 60 | 180 |
| PHENAZOPYRIDINE 100MG, 200MG TABS | 30 | 90 |
| PREDNISOLONE 15MG/5ML SYRUP | 60 | 180 |
| PREDNISOLONE SOD PHOS 15MG/5ML SOL | 30 | 90 |
| PREDNISONE 10MG, 20MG TABS | 30 | 90 |
| PREDNISONE 5MG TABS PACK 21'S | 21 | 63 |
| PREDNISONE 10MG TABS PACK 48'S | 48 | 144 |

Drugs Priced Below \$12 for 90-day Qty.

| Drug Name | 90-day Qty. |
|-----------------------------------|-------------|
| BETAMETHASONE DIP 0.05% OINT 15GM | 45 |
| FLUOCINOLONE ACET 0.025% CRM 15GM | 45 |
| FOLIC ACID 1MG TABS | 90 |
| FUROSEMIDE 20MG, 40MG TABS | 90 |
| MULTI-VIT/FE FL .025MG DROPS 50ML | 150 |
| PREDNISONE 2.5MG, 5MG TABS | 90 |

Birth Control

| Drug Name | \$12 Qty. (1-month supply) |
|----------------|----------------------------|
| MONONESSA TABS | 28 |
| TRINESSA TABS | 28 |

Persons enrolled in a publicly funded healthcare program are ineligible. Membership may be cancelled within 30 days of issue date. For complete terms and conditions, call 1-866-922-7312 or visit www.walgreens.com/rxsavingsclub. Walgreen Co., 200 Wilmot Rd., Deerfield, IL 60015. \$12 prescriptions are for a 90-day supply of a covered drug at a commonly prescribed dosage. The list of covered drugs is subject to change. Not all prescription drugs are covered by this program. State law may prohibit the advertising of controlled substances. If you have a prescription for a controlled substance, please talk to your local pharmacist to see if your medication is included in the Prescription Savings Club Formulary. Only prescriptions initially filled in person at a participating pharmacy are eligible for the \$12 rate; refills must also be picked up in store, but may be ordered in person, online or by phone. This program is not available for prescriptions filled by mail order. See your Walgreens pharmacist for more information.